



HARVARD Kennedy School
JOHN F. KENNEDY SCHOOL OF GOVERNMENT

Recent Declines in Labor's Share in U.S. Income: A Preliminary Neoclassical Account

Faculty Research Working Paper Series

Robert Z. Lawrence

Harvard Kennedy School

July 2015

RWP15-034

Visit the **HKS Faculty Research Working Paper Series** at:

<https://research.hks.harvard.edu/publications/workingpapers/Index.aspx>

The views expressed in the **HKS Faculty Research Working Paper Series** are those of the author(s) and do not necessarily reflect those of the John F. Kennedy School of Government or of Harvard University. Faculty Research Working Papers have not undergone formal review and approval. Such papers are included in this series to elicit feedback and to encourage debate on important public policy challenges. Copyright belongs to the author(s). Papers may be downloaded for personal use only.

www.hks.harvard.edu

Acknowledgements

This paper received funding from the Peterson Institute for International Economics and the MasterCard Center for Inclusive Growth.

The views expressed herein are those of the author and do not necessarily reflect the views of the National Bureau of Economic Research or the Harvard Kennedy School.

© 2015 by Robert Z. Lawrence. All rights reserved. Short sections of text, not to exceed two paragraphs, may be quoted without explicit permission provided that full credit, including © notice, is given to the source.

Abstract

As shown in the 1930s by Hicks and Robinson the elasticity of substitution (σ) is a key parameter that captures whether capital and labor are gross complements or substitutes. Establishing the magnitude of σ is vital, not only for explaining changes in the distribution of income between factors but also for undertaking policy measures to influence it. Several papers have explained the recent decline in labor's share in income by claiming that σ is greater than one and that there has been capital deepening. This paper presents evidence that refutes these claims. It shows that despite a rise in measured capital-labor ratios, labor-augmenting technical change in the US has been sufficiently rapid that effective capital-labor ratios have actually fallen in the sectors and industries that account for the largest portion of the declining labor share in income since 1980. In combination with estimates that corroborate the consensus in the literature that σ is less than 1, these declines in the effective capital ratio can account for much of the recent fall in labor's share in US income at both the aggregate and industry level. Paradoxically, these results also suggest that increased capital formation would raise labor's share in income.

Recent Declines in Labor's Share in US Income: A Neoclassical Account

Introduction

Over the past decade, in addition to its poor employment performance, the US economy has been plagued by sluggish wage growth and rising income inequality. Whereas the debate over inequality in the 1980s and 1990s was focused on the growing disparity between the earnings of skilled and unskilled workers and the earnings of the super-rich (Lawrence 2008) growing income inequality between capital and labor income has now been added to these concerns. Remarkably, the growth in real GDP per worker over the decade of the 2000s which averaged 1.7 percent annually was actually more rapid than in the 1970s, 1980s or 1990s, yet in the 2000s workers saw almost no increase in their take home pay. Consistent with this gap between labor productivity and wage growth was a pronounced decline in the share of US national income earned by workers.

This is an unusual development. For much of the past century, the long run shares of national income earned by capital and labor in the US have been fairly stable.¹ As Figure 1 shows, since the late 1960s, the share of labor compensation (a measure that includes wages and benefits) in national income cycled between 64 and 67 percent.

¹ See for example Cobb & Douglas (1928), Keynes (1939), Kaldor (1961), Dew-Becker and Gordon (2005), Mankiw (2007), Lawrence (2008). Actually the “stability” of shares is quite sensitive to how they are measured. It makes a difference whether labor compensation is measured relative to net or gross capital income and relative to the entire economy or just the corporate sector. For an early skeptical view of what exactly we mean by a constant share see Solow (1958). For a recent discussion see Kraemer (2010). For a skeptical view that labor's share has recently fallen to all-time lows emphasizing the difference between net and gross income see Bridgman (2014).

However, since 2008 that share has fallen considerably below this cyclical variation.² The counterpart to the declining labor share has been a rise in the share of capital that has been especially concentrated in corporate profits, and since claims on profits are far less equally distributed than wages, this has contributed to increased income inequality.

[FIGURE 1]

There are several plausible reasons for this development (globalization, automation, weak-bargaining power of labor, political capture, increasing mark-ups) but the natural starting point for explaining factor income shares is the neoclassical theory of the functional distribution of income enumerated by John Hicks and Joan Robinson in the 1930s.³ This theory highlights the role played in allocating income between capital (K) and labor (L) by the ease with which they can be substituted. When there are constant returns to scale and competitive conditions and a production function where output $Y = F(K,L)$ the magnitude of these responses can be summarized with a single parameter – the elasticity of substitution – commonly depicted by σ – and defined (negatively) as $-d \log (K/L) / d \log (F_K / F_L)$. If factors are paid their marginal products, R the rental rate $= F_K$ and W the wage rate $= F_L$. This implies that ratio of factor income shares is $\frac{RK}{WL} = \frac{R}{W} * \frac{K}{L}$. The components of this ratio will generally change in opposite directions. Thus for labor's share to fall, RK must rise by more than WL . When $\sigma = 1$, the components will change proportionally and the factor income ratio (RK/WL) will

² With the exception of the UK, the European experience has been different. There was a rise in the labor share in the 1970s, but thereafter the labor share declined in many European countries and Ireland (Bertoli and Farina 2007, 12). See also: (O. Blanchard 1997, O. Blanchard 2006).

³ See Hicks (1963) and Robinson (1932). For a comprehensive review of the evidence and theories of labor's share see Schneider (2011).

remain constant.⁴ When σ is > 1 the factors are gross substitutes. A given percentage rise in K/L will give rise to a smaller percentage fall in R/W and labor's share will fall; conversely if σ is < 1 the factors are gross complements. A given percentage rise in K/L will be more than offset by a fall in R/W and labor's share will rise.⁵ As shown by Ellsby et. al (2013) the relationship between changes in labor share in income (L_s) and the capital-labor ratio will be captured by the equation:

$$d \ln L_s = - (1 - L_s) \frac{\sigma - 1}{\sigma} d \ln K/L \quad (1)$$

In this framework, σ can also be used to relate changes in factor shares to changes in the capital-output ratio (K/Y).⁶ Where K_s is the share of capital for example, the relationship between K_s and changes in K/Y is:

$$d \log K_s = (1 - \frac{1}{\sigma}) d (\log (K/Y)) \quad (2)$$

In this specification, an increase in the capital-output ratio will be associated with a rising share of capital in income if σ is > 1 ; a declining share of capital if $\sigma < 1$; and no change in K_s when $\sigma = 1$.

Determining σ and changes in the quantities of capital and labor used as inputs, however, is not sufficient to explain changes in income distribution when there is technological change. Hicks characterized technical change according to its relative impact on the marginal products of the two factors. He called such change "capital

⁴ Note when speaking of σ here it is defined here so that it is positive.

⁵ Considering extreme cases when K/L increases reveals the intuition behind this result. If $\sigma = \infty$, and capital and labor are perfect substitutes, their relative prices do not change and if the supply of capital increases, and w/r remains fixed, capital's share must rise. Conversely, if it is impossible to substitute capital for labor, and $\sigma = 0$, starting from a position in which the capital labor ratio was equal to the required proportion in which these factors had to be used and thus w and r were both positive, any increase in capital would be redundant and thus capital's marginal product would decline to zero. The result would be that all income would accrue to labor.

⁶ The elasticity of F_k with respect to the capital-output ratio K/Y is given by $\frac{-1}{\sigma}$. This implies that the ratio of capital's share in income $K_s = F_k K/Y$. Thus $d \log K_s = (1 - \frac{1}{\sigma}) d (\log (K/Y))$. See Rognlie (2014) and Bentolia & Saint-Paul (2003) for derivations.

saving” if it raised the marginal product of labor by more than it raised the marginal product of capital. Following Uzawa(1961), however, I will use the more common appellation “labor-augmenting.” For a given wage-rental rate such a change would lead firms to use more labor and less capital ratio to produce a given quantity of output. On the other hand, “labor-saving” technical change (or what is normally called capital-augmenting) raises the marginal product of capital by more than the marginal product of labor and leads to the use of higher-capital-labor ratios at any given wage-rental ratio. These changes can be captured in a production function by the degree to which each factor is augmented.⁷ Assume λ_l and λ_k are measures of labor and capital augmenting change respectively, if $d\lambda_l$ is $>$ $d\lambda_k$, there is net labor augmenting technical change (or capital-saving change) and if $d\lambda_l$ is $<$ $d\lambda_k$, there is net capital augmenting change (or labor-saving change)).

Once technical change is taken into account, what matters for income distribution is the change in the *effective* capital-labor ratio $k = (\lambda_k K / \lambda_l L)$. If $d\lambda_l$ and $d\lambda_k$ are equal, there is so-called “Hicks neutral” technological change and both factors are augmented to an equal degree. With non-neutral change, however, complete explanation of changes in factor income shares requires not only determining σ and changes in the physical measures of K and L but also how λ_l and λ_k have evolved over time. With technical change equation (1) becomes

$$d \ln L_s = - (1 - L_s) \frac{\sigma - 1}{\sigma} d \ln (\lambda_k K / \lambda_l L) \quad (3)$$

⁷ If technical change raises the marginal product of capital by more than the marginal product of labor Hicks (op. cit chapter VI, page 121-122) defines it as “labor saving” but I refer to it here as “capital augmenting”. Similarly, technical changes that raise the marginal product of labor by more than the marginal product of capital are called “capital saving” by Hicks, but I refer to such changes as “labor augmenting”.

In this framework, there are two possible explanations for labor's recent declining share using equation 1: The first is that capital and labor are gross substitutes, i.e. that σ is > 1 , and there has been a rise in k and the second is that capital and labor are gross complements, i.e. that $\sigma < 1$ and there has been a decline in k .

Several recent studies have come down on the side of the first explanation and argue that $\sigma > 1$ and that an increase in capital deepening is responsible for the fall in labor's share. Elsby et. al (2013,40) point to increased capital intensity caused by the offshoring of labor-intensive tasks from the US as the major cause. Karabarbounis and Neiman (2014) point to a global decline in relative prices of investment goods which they argue has raised capital-labor ratios and reduced labor's share; Piketty (2014) develops a model in which the capital-output ratio is a function of the ratio of s/g – the saving rate over the growth rate – and thus the capital output ratio rises when g declines and s remains constant. Piketty and Zucman (2013) use this result and equation (2) to calibrate that σ is > 1 and the decline in labor's share is the result of a higher capital (wealth)-output ratio. All these claims are, however, at odds with the preponderance of the studies that have found that in the US σ is < 1 and although there is empirical evidence and a theoretical presumption that technical change has been labor augmenting, they all ignore a possible role for changes in the pace of labor augmenting change in accounting for the change in factor income shares.

This paper puts forward the alternative “gross-complements” explanation for the declining US labor share i.e. that $\sigma < 1$ and the effective capital-labor ratio has declined. It shows that labor-augmenting technical change in the US has been sufficiently rapid, both at the aggregate level, and in the sectors and industries that account for the largest

portion of the declining labor share, that despite a rise in the measured capital-labor ratios, the effective capital-labor ratios have fallen. In combination with estimates that $\sigma < 1$, these changes in k *can* account for the declines in labor's share in GDP since 1980. This is the case for declines in labor share at the aggregate level, for declines within key sectors such as manufacturing, mining, and information technology, and for declines within the manufacturing industries that have had the largest impact on the declining labor share overall.

The results are compatible with the extensive empirical evidence surveyed by Chirinko (2008) that $\sigma < 1$ and with the critiques of Piketty advanced by Rognlie (2014), Summers (2014), and Acemoglu and Robinson (2014). The results are also consistent with the evidence that on balance US technical change has been labor augmenting (Antras 2004, Wei 2014, Young 2010). In addition, they accord with the fundamental insights of growth theory that when $\sigma < 1$, labor augmenting technical change is required to maintain a balanced growth path (i.e. a path where capital and output grow at the same rate) in the face of rising capital-labor ratios (Uzawa 1961, Jones and Scrimgeour 2004). They are also supported by work of Acemoglu (2003, 2002) who explains how endogenous technical change is likely to revert to pure labor augmenting change.

This paper uses industry and aggregate data to estimate a CES production function assuming that technical change has an exponential functional form, but its conclusions are in line with those of Oberfield and Ravel (2014) who use manufacturing plant data and a different identification strategy based on variations in factor prices across local areas. Despite their different methodology, they also find that σ in US

manufacturing is less than one and that most of the recent decline in the share of labor in US manufacturing can be accounted for by “changes in the pace of the bias of technical change”.⁸

Outline

Section I, discusses measurement and data issues and explores the timing, magnitude and sector sources of various measures of recent declines in the US labor share. Shift-share analysis is used to measure the degree to which the overall decline can be attributed to share changes within industries and changes in industrial composition. The sectors that have made the most important contributions to the aggregate change over various periods are identified. Since 2000, these include the manufacturing, mining and information technology sectors and industries within manufacturing such as petroleum refining and coal products, chemicals and computers and electronics. Section II critiques the studies that claim capital and labor are gross substitutes, point to capital deepening to accounting for the decline in labor’s share and fail to evaluate the pace of labor-augmenting technical change. These accounts are contrasted with evidence that $\sigma < 1$, on balance technical change has been labor augmenting, and recent growth in investment, especially in US manufacturing has been unusually weak with the result that the capital-output ratio has fallen. Section III applies the approach developed by Antras (2004) to simultaneously estimate σ and the magnitude of factor-augmenting technical change. These estimates are used to derive

⁸ Oberfield and Raval (2014) *op. cit.* are agnostic as to the precise source of this bias – they mention automation, offshoring and the decline of unions as possibilities; however, this paper places technical change at the heart of the explanation.

measures of changes in the effective capital-labor ratio (k) which are combined with the estimates of σ to demonstrate that, especially in manufacturing, recent changes in labor's share in the aggregate as well as in key sectors and industries *can* be explained with a reasonable degree of accuracy. Section IV discusses the implications of the findings for policy measures that affect capital formation, in particular the importance of stimulating capital formation to increase labor's share, points to alternative methodological approaches and provides suggestions for further research.

Section I: Measures and the Sectoral Sources of the Decline in Labor's Income Share

The most useful measure of factor shares for discussions of overall US income inequality is the share of labor compensation in National *Factor* Income. (NFI). This measure includes (a) the compensation of employees; (b) the net income earned by capital in various forms (i.e. proprietor's income, rental income, corporate profits and net interest) after depreciation and inventory valuation adjustments have been taken into account and (c) net international factor payments. The more comprehensive measure of national income (NI) includes taxes on domestic production and imports, but since taxes could be used for a variety of purposes that could benefit either capital or labor it is appropriate to subtract them from national income when exploring the shares that are relevant for inequality. In practice, though, since these taxes have been a fairly constant share (around 8 percent) of national income between 1980 and 2014, their inclusion in the aggregate measure of national income is not of great consequence when tracking recent changes in factor shares.

Net *domestic* income in turn subtracts the receipts by US nationals from foreigners and adds the payments made by US nationals to foreigners and thus measures the incomes of factors that are located in the United States. It is more appropriate as a dependent variable when causation is being ascribed to developments that occur in the US. For empirical analysis of factor shares, however, equivalent measures on the production side are generally used and domestic product is thus explained by inputs in the domestic economy. In this case, Gross Domestic Product (GDP), the most commonly used aggregate output measure of value added produced within the United States includes labor compensation, gross operating surplus, and taxes on production and imports. As with net domestic factor incomes, taxes on production and imports and depreciation should both be subtracted for tracking the relative income shares in the domestic economy that are relevant for inequality (Bridgman 2014).

As is apparent from Figure 2, which reports labor's share in various income measures since 1929, there is a strong cyclical component to the movement in labor's share. The wage-share typically rises with the tightening of the labor market at the end of expansions, remains high at the start of recessions, but then falls during the initial phases of recovery. Because of this volatility, it is not easy to distinguish the trend from cycles. Indeed, it is possible to examine the data and to discern a declining trend in labor share in US GDP after 1969, after 1980, or after 1990 – consider the peaks in Figure 2, – or actually to see no trend at all after 1969 until after 2008 – with the share cycling around 65 percent of income. Writing in 2005 for example, Dew-Becker and Gordon (2005:71) noted “labor's share was actually higher in 2005:Q1 than eight years earlier. Over a longer period going back to 1954, labor's income share has been

virtually constant.” And others, writing even later, such as Lawrence (2008), still emphasized the long run constancy of US income shares⁹ dating back to the 1980s.

[FIGURE 2]

As shown in Figure 2, various measures of labor’s share give somewhat different pictures, but all indicate that labor’s share rose between the 1930s and 1970 and that since 2008 labor’s share has been unusually low. The measure most consistent with the proposition that the share has been constant over the long run is the share of compensation in GDP (red lower line). As shown in Figure 3, depreciation has constituted a growing share of GDP over the long run, and since NDP and national income take depreciation into account, the share of labor compensation in these measures actually had a stronger upward trend through the late 1960s than the share in GDP. After 2008, however, because of slow capital formation, depreciation has actually grown more slowly than GDP. In addition, net foreign factor payments have increased so that labor’s share in national income is somewhat lower than in net domestic product. In 2008, the 55 percent share in national income was similar to what it was in the 1950s and even the 1940s. However, from the standpoint of concerns about income equality, labor’s share in net factor incomes (the highest purple line) is the most relevant measure and it shows labor’s share in 2014 at levels last seen in the late 1940s.

⁹ As noted in several studies (Harrison 2005, O. Blanchard 1997), since the 1970s, the international, and especially the European experience has been much more varied, with some countries, like the US and UK having maintained fairly constant shares until recently, while others in continental Europe have experienced periods of both rising and falling shares.

[FIGURE 3]

Impact. Since 2000, labor's share has fallen by 5.1 percentage points of net national factor income. Had labor compensation per hour simply kept pace with the rise in net national factor income per hour since 2000, for example, in 2014 worker compensation would have been 7.2 percent higher than it actually was. Moreover, over the past decade, take-home pay has grown more slowly than labor compensation because of the additional costs of providing benefits such as more expensive healthcare.¹⁰ Had take-home wages and salaries kept pace with the growth in net factor income between 2000 and 2014, in 2014 wages would have been 9 percent higher. These aggregate labor compensation and wage measures include the earnings of "super-rich" Americans at the very top of the wage distribution. Since the most well paid wage earners have increased their share of labor compensation this has implied even greater pressures on the earnings of workers in the middle and lower ends of the wage distribution.

Business Sector

The conclusion that the behavior of labor's share in the 00's has been different also emerges from business sector data. As shown in Figure 4, the rise in real product compensation matched the rise in gross output per worker between 1969 and 2000 and it matched the rise in net output per worker after 1969 until as late as 2008. There was a

¹⁰ According to Burtless (2007), the real average compensation of a full-time worker increased by 5.6 per cent between 2000 and 2005, but of this increase 10 per cent went on increased social insurance contributions, 24 per cent on increased employer pension contributions, and 35 per cent on health insurance, leaving less than a third for increased cash wages (Burtless 2007, Figure 3).

larger and growing gap between the rise in both gross and net output per worker and the real compensation (i.e. wages deflated by the consumer price index). This gap is sometimes pointed to as indicating that labor is not getting what it deserves, but this gap primarily reflected differences between the mix of goods and services that workers consume and the mix that they produce (Lawrence 2008). Generally, the prices of the goods and services workers produce have risen more slowly than the prices of those that they consume. On the one hand, there has been relatively rapid growth in productivity in equipment which workers do not buy, while on the other hand, the consumer price index includes housing services that are not something workers (outside of the construction sector) produce.¹¹ Had workers chosen to consume the same mix of goods and services they produced, their real (product) wages *would* have kept pace with (gross) labor productivity growth between 1965 and 2000 and net labor productivity growth between 1965 and 2008.

However, as Figure 4 indicates, since 2000, the growth in real product compensation *has* fallen behind the growth in real output per worker and this shortfall *does* mean that a declining share of gross business sector income has accrued to labor. Moreover, since 2008, the rise in real product compensation has also fallen behind the rise in net value-added per worker, implying a growing share in business income for claimants on capital. Nonetheless, it should be noted that around 2000 the share of labor compensation was unusually high, in part because of the activity associated with the dot-com boom. In addition, excluding this period gives rise to somewhat smaller shortfalls between the growth of net value-added per worker and the real product wage.

¹¹ For a more complete discussion of the role played by housing see Rognlie (2015).

[FIGURE 4]

Tracking the shares of labor and capital in national income misses an additional source of growing inequality. Income earned by owners of capital takes several forms (corporate profits, net interest income, proprietors and rental income) and recently corporate profits have constituted a growing share of capital income. The 5.1 percentage point increase in the share of corporate profits in national income after 2000 is actually greater than the decline in labor's share in income primarily because of a fall in the share of another component of capital income – net interest. Given that corporate profits accounted for 8.8 percent of national income in 2000, the rise of 5.1 percentage points in the share of corporate profits between 2000 and 2014 represented an increase of 58 percent in the corporate profit share in national income between 2000 and 2014 and a 47 percent increase over the average 9.4 percent of net corporate value added accounted for by corporate profits between 1980 and 2000. Most of this increase reflects an increase in the share of corporate profits in domestic income, but national income also includes the foreign earnings of US multinationals, and about a quarter of all corporate profits were earned abroad in both 2000 and 2014.¹²

[FIGURE 5]

In sum, labor's share in income has fallen by a variety of measures especially since 2000. The most inclusive measures, those for national income point to declines on

¹² In 2014, for example, foreign profits accounted for 25 percent of all US corporate profits, about the same as in 2000. By contrast, net foreign profits constituted 14 percent of profits between 1990 and 1999. Moreover, foreign profits contributed 38 percent of corporate profits in the recession year of 2008.

the order of 7 percent, with the declines in the gross measures larger than those that take depreciation into account. ¹³However, these national measures reflect compensation in the government sector as well as measures that impute labor compensation to proprietors. In the corporate sector, the declines in share have been even larger – on the order of 11 percent since 2000. At the same time, the share of corporate profits in national income has increased by 57 percent.

Data selection

When determining the causes of the declining labor share in income it is helpful to identify the industries that have made the greatest contribution. However, examining changes in income shares in the industries that make up GDP presents challenges because of revisions in the methods used to classify industries and to estimate income. Several industrial classifications have been used (e.g. SIC in early periods and NAICS for recent periods) and, in addition, the Bureau of Economic Analysis (BEA) has recently revised its methodology for estimating value-added by industry by changing its treatment of inputs such as R&D. Previously, spending on R&D, entertainment, literary and artistic originals were all treated as inputs, which were subtracted from value-added. In recent revisions, however, these items are now included as part of value-added and investment in fixed assets. These changes have the effect of raising the estimates for value-added in R&D-intensive industries – most of which are to be found

Change in Labor Compensation Share			
	1980–2014		2000–2014
Nat Income	-8.69		-6.94
GDP	-6.81		-7.03
GNP	-6.83		-7.82
NNP	-5.93		-6.89
DomCorpgva	-12.17		-11.70
DomCorpva	-9.83		-10.50

13

in manufacturing. Since the changes are more important for estimates of gross operating surplus than for labor compensation, the new measures also reduce the share of value-added represented by aggregate labor compensation. This means that combining the unrevised data prior to 1997 and the revised data thereafter has the effect of showing a stronger declining trend in the share of labor in general and in the manufacturing sector and R&D-intensive industries in particular.

Unfortunately, the revised data are only available after 1997, whereas data using the previous methodology, which assumes R&D and several other components of firm spending are input costs, are available for the years 1987 through 2011. While I will use the most recent revised data for studying recent changes in order to identify the industries that have played the largest role in the recent declines in labor share, for longer run analysis, I therefore use different sources.

The data developed by Jorgenson, Ho and Samuels (2012) are especially useful because they have developed consistent time series of gross factor incomes using the North American Industrial Classification System, (NAICS). I will therefore rely on their measures for analyzing the long run period 1947 to 2010 for the economy as a whole as well as for the long run behavior of labor shares in major sectors such as manufacturing, mining, and telecommunications, posts and telegraphs. In addition, to undertake the analysis at a more disaggregated level than is available in their data, I will use the (unrevised) data that are available on an NAICS basis from 1987 and 2011 from the BEA and the BLS. I will also use the data developed by the National Bureau of Economic Research in its manufacturing data-base in an exercise at the 6-digit NAICS industry level.

Industry contributions

The long-run stability of the aggregate labor share in US GDP is actually quite surprising given the volatility of labor shares in income within several industries and the changing of contributions of industries to overall value-added in the economy.¹⁴ Therefore, in explaining the behavior of the overall labor share in value-added, it is helpful to distinguish between the impact of changes in sector shares in output and changes in labor shares that occurred within particular sectors. This can be done by decomposing the overall change in labor share (Sl) in gross value-added into changes in sectors output shares (“between industry changes”) denoted by W_i and changes within-industry labor shares denoted by S_{li} using the following formula:

$$\Delta Sl = \sum_i \Delta W_i S_{li} + \sum_i W_i \Delta S_{li}$$

Change in Labor Share = Between Industry Weight Changes + Within Industry Labor Share Changes

[TABLE 1]

As reported in Table 1, while the overall share of labor compensation in GDP fell by about 4 percentage points between 2000 and 2012, the decline was the result of a large number of sectors making negative contributions and just a small number, especially Educational Services and Health Care and Government, making positive contributions. Nonetheless, over this period, the negative impacts were highly concentrated in a few sectors. Specifically, the “between” and “within” sector

¹⁴ For a theoretical exploration of the relationship between aggregate and sector shares see: (Acemoglu and Guerrieri 2008).

decomposition shows that they account for just 22 percent of GDP experienced declines whose impact was equal to 82 percent of the overall decline. (3.28 of the 3.92 percentage point decline) or, since several sectors made positive contributions, 66 percent of all the absolute changes. While manufacturing contributed only 15 percent of overall value-added in GDP in 2000, the output weighted declining labor share in manufacturing was equal to 44.4 percent (1.74 percentage points) of the overall economy-wide drop in labor's share in income; the weighted impact of information services (which had an unusually high share in 2000 because of the dot-com boom with lots of start-ups who were not earning profits) and contributed 4.6 percent of GDP was equal to 21.2 percent of the overall decline and the impact of mining (just 1.1 percent of GDP) was 17.59 percent. It is also noteworthy that almost all of these changes – 3.97 of the 4.0 percentage points – were reflective of changes within these sectors as opposed to changes in the industry shares in value-added (i.e. the between sector changes).

While these sectors have strongly influenced the aggregate since 2000, in understanding their behavior it is useful to inquire when the declines in labor share within these sectors actually began. For this purpose, the long run data of Jorgenson et al. (2012) are useful. As shown in Figure 3, the changes in manufacturing that were evident after 2000 were actually a continuation of a trend that began in the mid-1980s. Prior to that, labor's share in manufacturing remained fairly constant for a long period: The share of labor in income in manufacturing in 1988 was about the same as it was in 1954. Long run factor income shares in mining, by contrast, have been quite volatile over the long run. They remained in the vicinity of forty percent until 2000, but then experienced a large decline. The information technology sector, captured in the

Jorgenson et al. data as Posts and Telecommunications, experienced a large decline between 1947 and 1960, remained around 60 percent through 1980, and then had a declining trend that was interrupted by the rise associated with the dot.com boom around 2000.

This suggests that the behavior of manufacturing and information technology as far back as the 1980s warrant attention, whereas the behavior of mining should focus mainly on the period after 2000. To explore the impact of these medium term changes, however, it is necessary to use the unrevised official NAICS data, which are only available after 1987. As reported in Table 2, in these data the aggregate decline in labor's share between 1987 and 2011 is relatively small – 2.7 percentage points. However, this stability is the result of offsetting changes in individual sectors. In particular, there are very large declines in the labor-income shares in manufacturing from 68 to 52 percent and in mining from 40 to 28 percent. There are substantial but smaller declines in retail and wholesale trade, transportation and information, but also increases in labor's share in industries, such as agriculture, utilities, professional and business services and education and healthcare.

[FIGURE 6]

The shift-share analysis reported in Table 2 again breaks down the overall change between changes due to alterations in the relative sizes of the sectors (between sector changes) and those due to changes within sectors. It suggests again that overwhelmingly the changes reflect shifts *within* rather than *between* sectors. In 1987, the labor share in income in manufacturing was fairly high and while its shrinkage from

17.4 to 11.5 percent of GDP contributed 0.6 percentage points to the fall in the aggregate share, the contribution of the share changes within manufacturing were far more important – they were equal to 1.8 percentage points. Further, the 2.4 percentage point impact stemming from manufacturing was equal to 87.9 percent of the overall fall of 2.7 points.

[TABLE 2]

Manufacturing

The decline in the labor share in manufacturing is especially interesting due to three reasons. First, it began earlier than the aggregate labor-share. Second, it made the largest contribution to the aggregate decline after 1987. Third, it is a sector that is heavily involved in international trade. In 1987, judged by the share of labor earnings in value-added, manufacturing was a relatively labor intensive sector. It accounted for over a quarter of all of the labor compensation in private industry but just 16 percent of both the gross and net operating surplus earned in private industry. By 2011, manufacturing's share of labor compensation in private industry had declined to about 14 percent, about the same as its share in gross operating surplus. In 1987, judged by income shares, the typical manufacturing business was thus more than fifty percent more labor intensive than the rest of private industry. However, by 2011, labor intensity in manufacturing was about the same as the rest of economy.

As a sector experiencing increasing pressures from international competition, as well as a large decline in employment, one might have expected that there would be

relatively weak wage growth in manufacturing. However, the drop in labor's share in manufacturing income did not result from a large decline in the relative compensation of manufacturing workers. In fact, the rise in average compensation in manufacturing roughly kept pace with compensation growth in the rest of the economy. Between 2000 and 2012 for example, the increases in average compensation per full time employee in manufacturing and in private industry averaged 64 and 61 percent respectively.¹⁵

One possibility is that this wage performance reflected a shift in the employment mix towards more skilled and thus higher paid workers. Indeed this mix change does explain why manufacturing compensation actually increased somewhat more rapidly than in the rest of private sector. However, the employment cost (ECI) index tracks the cost of employing workers with a given set of attributes (e.g. skill, education, experience etc.) and thus gives a better measure of manufacturing wage growth for workers with given skill levels. This measure shows that between 1987 and 2014, the ECI for manufacturing increased only 2 percent less than the ECI for all civilian workers (and between 2000 and 2012 manufacturing wages grew 1.5 percent more slowly). Thus weak relative wage growth is not much of the explanation for labor's declining share in manufacturing as compared to the rest of the economy. In addition, as shown in Figure 7a, manufacturing's constant share in both the gross and net operating surplus earned in private industry over this period occurred despite a decline in the overall share of the fixed assets devoted to manufacturing. Thus the declining share of labor compensation in manufacturing reflected the combination of a massive drop in manufacturing employment and an increase in overall profitability rather than a decline

¹⁵ Source: BEA.GOV. A similar result that labor's bargaining power has not been affected is obtained by Brock & Dobbelaere (2006). Kamal, Lovely & Mitra(2014) find that globalization increased labor share in China. Ahsan & Mitra(2014) find a similar effect for labor intensive industries in India.

in the relative pay of manufacturing worker or an increase in the rate of investment. It is also noteworthy that in real terms, manufacturing share in output has remained roughly constant since 1947.

[FIGURE 7A]

[FIGURE 7B]

As can be seen in Figure 7b, rates of return to capital, as indicated by the ratio of the net operating surplus to the value of fixed assets, have remained fairly constant in private industry. However, the returns in manufacturing have increased substantially since 1998, reaching 20 percent in 2012.

A third shift-share analysis for the manufacturing sector allows us to determine which three digit NAICS industries have been the largest contributors to the declining labor share in manufacturing value-added. While 14 of the 18 industries in manufacturing experienced some decline in labor share, the changes with large impacts were concentrated in three industries – petroleum and coal products, chemical products, and computers and electronics. Together, these industries which accounted for just 22.6 percent of value-added in manufacturing in 1987, had impacts that amounted to 68 percent of the overall decline in labor share between 1987 and 2011. Changes in industrial composition – between industry changes in weights – accounted for just over a fifth of the decline, while 77.6 percent of the overall decline reflected the impact of within-industry changes. The drops in labor's share in petroleum refining (43.2 to 12.2

percent), chemical products (49.6 to 35.2 percent), and computer and electronic products (81.7 to 57.7) were particularly dramatic.

[TABLE 3]

A similar result emerges when data for 473 6-digit industries are used in a shift share analysis. The computation in Table 4 indicates that 84 percent of the 13.9 percentage point change between 1980 and 2000 can be ascribed to changes within the 6-digit industries. Although the decline is smaller between 2000 and 2009 because of cyclical effects, a similar conclusion – that within-industry changes dominate – emerges from the decomposition of the decline between 2000 and 2009. What is clear, therefore, is that the declining labor share both within the manufacturing sector and the economy as a whole was not primarily due to the reallocation of resources towards less labor intensive industries. Instead, the bulk of the changes came from changes in shares that have taken place within industries: 295 of 473 industries, accounting for 76 percent of value-added in 2009 experienced within-industry declines in labor share.

[TABLE 4]

In sum, labor's share in income has fallen, especially since 2000, to a degree that appears to be outside the historical norm of cyclical fluctuations. However, even the fairly constant labor share prior to 2000 was the outcome of offsetting developments across sectors, and in particular, a rise in labor shares in several service sectors that

offset declines in the information and manufacturing sectors that began in the 1980s and in the mining sector after 2000. Within manufacturing, the changes were pervasive, but a few industries, especially petroleum refining, chemicals, and computers and electronics have played a key role in the decline. In the case of petroleum and chemicals this is both because their output shares have increased as well as labor's share having declined. However, most of the changes in labor share have reflected changes in factor shares within industries.

The explanation to be offered later in this paper fits these facts. A fall in the effective capital-labor ratio will raise the marginal product of capital and thus the rental-wage ratio. If the elasticity of substitution is less than one, this decline will raise the rate of return and the share of capital. At the same time, with sufficiently inelastic demand for labor, with rapid labor-augmenting technical change, the labor share and the wage rate could actually fall despite the rise in the marginal product of labor.

Section II: Existing Studies

Several recent studies (Karabarbounis and Nieman 2014, Elsby, Hobjin and Sahin 2013, Piketty 2014, Piketty and Zucman 2013) offer explanations for recent declines in the share of labor that rest on claims that σ exceeds unity and there has been increased capital deepening.

Recent Studies

Karabarbounis and Neiman (2014) maintain that the declining labor income share, both in the United States and globally, can be explained by the acceleration in technological progress in the equipment industry and the associated decline in the relative price of capital goods that took place in the early 1980s. They find that, internationally, lower relative prices for investment goods are associated with lower labor shares in income and they use calibration methods based on this international cross-section relationship to estimate that σ of 1.42 best fits the data. While emphasizing more rapid technical change in the production of equipment, Karbarbounis and Neiman (2014) assume that there is factor-neutral productivity at the aggregate and firm level. As they acknowledge “The choice of a CES technology with elasticity greater than one rather than a Cobb-Douglas technology (with an elasticity equal to one) *is essential* (italics added) for producing declines in the labor share in response to declines in the cost of capital relative to the wage because firms increase their capital-labor ratios more than they would with Cobb-Douglas production” (14). In other words, given their assumption of Hicks neutral technical change, the only way they can explain labor’s declining share in their framework on the basis of a decline in the cost of investment goods is to calibrate a $\sigma > 1$. They have thus *by assumption* ruled out the explanation to be presented here, i.e. that $\sigma < 1$, and ignored the possibility that despite the decline in the relative price of capital and associated rise in the capital-labor ratio, more rapid labor augmenting technical change resulted in a decline in the effective capital-labor ratio.

In *Capital in the 21st Century*, Thomas Piketty’s model makes the capital-income ratio (K/Y) a function of the saving rate s and the growth rate g . His key

equation is $K/Y = s/g$. He then argues that with s unchanged, a decline in g will increase K/Y . If this rise in K/Y is to reduce labor's income share as can be seen from equation (2) above, σ must be > 1 . Piketty supports his claim that $\sigma > 1$ by citing Piketty and Zucman (2013), which presents evidence that in seven countries, the net income share of capital and the wealth-income ratio both rose between 1970 and 2010. This association leads them to calibrate that the elasticity of substitution lies somewhere between 1.3 and 1.6 (Piketty and Zucman 2013, 35). However, Rognlie (2014) points out that the measure of capital (wealth) that Piketty and Zucman use is the current market value and thus includes capital gains, whereas the equation that relates the capital share to the capital-output ratio using σ i.e. equation 2, should be specified in real terms. Rognlie shows that removing capital gains from the capital measure to obtain a more appropriate measure of capital radically reduces the capital to income ratio and he demonstrates that using book rather than market value – a more appropriate indicator of the impact of capital accumulation generated by saving – suggests that on average the countries in the sample used by Piketty and Zucman actually show a decline in the ratio of capital to income. If a falling capital-output ratio has led to a rising capital share in income, this would actually imply that σ is less than rather than greater than one, and thus undermine the prediction that increases in the capital-output ratio will cause capital's share in income to rise. The estimates provided by Piketty and Zucman thus appear to rest on faulty data and back-of-the-envelope calculations rather than rigorous econometric analysis. They are also contradicted by the large number of studies that find that $\sigma < 1$.

Elsby et al. (2013) offer no evidence of their own on the magnitude of σ , but the arguments in their paper reflect the assumption that σ is > 1 . For example, they observe that in the 00s the decline in labor's share in the US has been associated with a slowdown in the growth of the capital-labor ratio, and they argue that since slower growth in the capital-labor ratio should slow rather than accelerate the decline in labor's share (assuming $\sigma > 1$), the neoclassical framework is incapable of explaining the slowdown. Having rejected the framework, they then present evidence that attributes much of the decline in labor's share in income to off-shoring by US firms, and speculate that the offshoring of more labor intensive tasks has raised the capital-labor ratio within the US industries. In addition, they suggest that that with offshoring, σ could rise.¹⁶ However, if σ is actually < 1 , in the face of rapid labor-augmenting technical change, a decline in the effective capital-labor ratio *could* explain labor's declining share (the neoclassical explanation) and it is also possible that the off-shoring might have actually *reduced* the elasticity of substitution of the production that remains in the United States by making it more intensive in skilled labor (which is more complementary with capital).

The previous section concluded that US manufacturing has played a key role in contributing to the declining labor share in the US. It is noteworthy that the behavior of investment in manufacturing provides little support for the investment boom on which the explanations put forward by these authors rests. First, if lower prices for investment goods especially equipment are at the heart of the explanation, one might expect to see that the net capital stock in manufacturing had increased relatively rapidly in recent

¹⁶ See *ibid.* page 40 in which they observe that “if capital is more than unit elastic with respect to labor, Hicks’ (1932) result will imply that the U.S. labor share will fall”.

years. However, as shown in Figure 8, the average annual growth rate of the net capital stock in fixed assets in manufacturing has actually decelerated, and the share of manufacturing investment being devoted to equipment in particular has declined. Between 1950 and 1980, and 1980 and 2013, the annual growth rate in the net capital stock in fixed assets in manufacturing declined from 4.3 to 1.9 percent respectively and the annual growth rate in the net capital stock in equipment declined from 4.1 percent to 1.7 percent respectively. Moreover since 2000, the overall net stock of fixed assets and the net stock of equipment have averaged just 1.0 and 0.6 percent annual growth respectively.

[FIGURE 8]

Similarly, given the declining share of labor income, applying the argument used by Piketty (i.e. that $\sigma > 1$) we would have expected the capital-output ratio in manufacturing to have risen. Yet as shown in Figure 9, between 1980 and 2012 the ratio of the net fixed stock of assets in manufacturing to real manufacturing output actually declined by 33 percent! This decline is also inconsistent with the argument that as a result of offshoring, the labor intensive tasks have been shipped abroad and manufacturing value-added in the United States has become more capital intensive in the sense of a higher capital to output ratio.

[FIGURE 9]

The only evidence that capital-deepening has taken place in the US in recent decades, is the increase in the ratio of the net fixed capital stock to full time equivalent employment that is evident after 1990, especially in manufacturing.

[FIGURE 10]

However, the increases in capital-labor ratios have been achieved not by additional investment, but rather through substantial layoffs of manufacturing workers. Indeed, as shown in Figure 11, US non-residential investment as a share of GDP has been weak since 2000, especially in equipment in general and information technology equipment in particular.

[FIGURE 11]

Evidence on σ

Moreover, while they have gained prominence recently, these claims that capital and labor are highly substitutable are in the distinct minority. With a few exceptions, there have been many studies that have used a variety of estimation and calibration techniques that have overwhelmingly concluded that in both the short and long run, σ is < 1 . The original study which pioneered the CES function, that of Arrow et al. (1961), estimated σ as 0.57. Later studies by David and van de Klundert (1965) and Kalt (1978) estimated elasticities equal to 0.32 and 0.76, respectively. Hamermesh (1993) surveyed

a range of early estimates and found that the results were generally between 0.3 and 0.7. One noteworthy early exception was Berndt (1976) who found support for an elasticity equal to unity. However, Antras (2004) showed that if Berndt's equation was specified to allow for factor augmenting change, it indicated that "aggregate elasticity is likely to be considerably less than one and may even be lower than 0.5." Klump et al. (2007) use a variety of methods and obtained estimates of the elasticity of substitution between 0.5 and 0.64. Moreover, Chirinko (2008) summarizes a large number of studies finding that "while the estimates range widely, the weight of the evidence suggests a value of (σ) in the range of 0.40–0.60."¹⁷ Young(2010) uses several estimation techniques and concludes that aggregate US σ is "less than unity and perhaps less than 0.5" and he finds that the elasticity is less than unity for the large majority of the 35 individual industries he estimates separately. Wei (2014) uses an international sample of 40 countries and 34 industries. He finds that industry elasticities fall within a range from 0.4 to 0.9 and that country-level elasticities are "typically around 0.62." Mallick (2012) estimates σ for 90 countries and finds that the mean value is 0.34.¹⁸

It is plausible that over the long run, the possibilities of substitution are greater. Indeed, while Fragiadakis et al (2012) find that typically short run elasticities of substitution are less than unity, they also find that using a lagged dependent variable implies long run elasticities greater than unity. However, Chirinko and Mallick (2014) use time series methods to explicitly measure the long run elasticity and conclude that over the long run it is still less than one, and Juselius (2008) uses a model that assumes

¹⁷ Ronglie (2014) points out that 31 out of 36 of the studies cited by Chirinko have elasticities less than one.

¹⁸ The mean values for the East Asia and Sub-Saharan African countries are 0.737 and 0.275, respectively. For the OECD countries the mean is 0.340.

labor and product market imperfections and, using time series analysis on Finnish data, also concludes that the long run elasticity is less than one.

Most of these studies use aggregate time series and stipulate particular functional forms about the aggregate production function and the bias of technological change. However, Oberfeld and Raval (2014) adopt an approach that allows identification through exogenous variation in factor prices and recover the aggregate elasticity of substitution from plant level elasticities and estimates of the elasticity of demand. They distinguish changes within and across plants and, after aggregating plant data, find an aggregate elasticity of substitution for US manufacturing of 0.7 that has remained fairly constant over time.

Theory

The traditional workhorse of growth theory is the Cobb-Douglas production function whose elasticity of substitution is unity. If we accept that $\sigma < 1$, there are profound implications for growth theory. With Cobb-Douglas it also follows that the direction of technical change is irrelevant for income distribution. In the CES world, however, when $\sigma < 1$, a steady state with constant factor income shares and a constant capital-output ratio is only possible if technical progress is purely labor augmenting, see Uzawa (1961) and Jones and Scrimgeour (2004). In a model in which the bias in technological change is endogenous, Acemoglu (2002, 2003) has provided an explanation why in the long run, technical change will be purely labor augmenting.

If we accept that $\sigma < 1$, it must also be the case that for the most part technical change in the US has been labor-augmenting. In the US, the capital-labor ratio in

manufacturing and the economy as a whole has risen steadily, yet for long periods, prior to 1980 for manufacturing, and prior to 2000 for the economy, factor income shares remained fairly constant. This implies that the effective capital-labor ratio must have been constant, with labor augmenting technical change offsetting the rising capital-labor ratio.

Augmenting Change

This reasoning is supported by several empirical studies that have explicitly tried to estimate the direction of US technical change. Here, the pioneering work was undertaken by Antras (2004) who assumed that factor augmentation grew by a fixed percentage annually – an exponential specification. He found that on balance US technical change has been labor augmenting and that the annual growth in labor augmenting change has exceeded that of capital-augmenting change by about three percent. Klump et al. (2007) explore the functional form of labor and capital augmenting technical change and confirm that labor augmenting technical change is best captured by an exponential functional specification. However, they find that the best fit for capital augmenting change is a functional form that is hyperbolic and tends to disappear over time – a finding that supports the Acemoglu theory that in the long run, all technical change will be labor augmenting.¹⁹ Wei (2014) adopts the Antras specification and finds “At the country level, 35 of the 40 countries exhibit net labor-

¹⁹ In Acemoglu’s theory, with $\sigma < 1$, capital augmenting technical change reduces capital share and thus dampens the incentives for both capital accumulation and capital-augmenting technical change.

augmenting technical progress. However, at the industrial level, this is not always true.”²⁰

In sum, the evidence in support of the capital-deepening explanations based claims or assumptions that $\sigma > 1$ is weak and inconsistent with recent data for US manufacturing. On the other hand, the literature provides considerable support for the two components of the explanation I will advance. First, it shows that in both the short and the long run, σ is less than one; and second, it has developed strong theoretical reasons, supported by empirical evidence that on balance technological change has been labor augmenting. The following section shows that regressions which provide estimates of $\sigma < 1$, and labor augmenting technical change *can* explain the decline in labor’s share in US income.

Section III: Combining the Components: The Decline in Labor’s Share

This empirical analysis follows Antras (2004) who was the first to estimate the elasticity of substitution in a specification that expressly allowed for factor augmenting technical change. Specifically, the production function is assumed to have a constant elasticity of substitution σ and, in addition, factor augmenting technical change such that the capital and labor augmentation grow at constant rates of λ_k and λ_l respectively. Thus the production function for output Y and time t is

²⁰ Bentolia and Saint-Paul (2003) use a more complex model and reach more nuanced conclusions. “We find for the euro area for the period 1970–2005 an aggregate elasticity of substitution below unity (about 0.7) and a pattern of factor-augmenting technical growth rates where labor-augmenting technical progress growth dominates in the long run while capital-augmenting technical progress plays a significant role in the interim period. We also importantly find evidence for a structural break in this pattern of biased technical progress at the end of the 1990s with an upward shift in capital augmenting technical progress and a downward shift in labor augmenting progress.

$$Y_t = \left[\delta (A_0^K e^{\lambda k.t} K_t)^{\frac{\sigma-1}{\sigma}} + (1 - \delta) (A_0^L e^{\lambda l.t} L_t)^{\frac{\sigma-1}{\sigma}} \right]^{\frac{\sigma}{\sigma-1}} \quad (3)$$

The first order profit conditions require that the marginal product of each of the factors be equal to their prices i.e.

$$\text{Log} (Y_t / K_t) = \alpha_1 + \sigma \log (R_t / P_t^Y) + (1 - \sigma) \lambda k.t + \varepsilon_{1,t} \quad (a)$$

$$\text{Log} (Y_t / L_t) = \alpha_2 + \sigma \log (W_t / P_t^Y) + (1 - \sigma) \lambda l.t + \varepsilon_{2,t} \quad (b)$$

Subtracting equation (a) from equation (b) we obtain

$$\text{Log} (K_t / L_t) = \alpha_3 + \sigma \log (W_t / R_t) + (1 - \sigma) (\lambda l - \lambda k).t + \varepsilon_{3,t} \quad (c)$$

We can also express the equations by reversing the dependent and independent variables.

$$\text{Log} (R_t / P_t^Y) = \alpha_4 + (1 / \sigma) \log (Y_t / K_t) - [(1 - \sigma) / \sigma] \lambda k.t + \varepsilon_{4,t} \quad (d)$$

$$\text{Log} (W_t / P_t^Y) = \alpha_5 + (1 / \sigma) \log (Y_t / L_t) - [(1 - \sigma) / \sigma] \lambda l.t + \varepsilon_{5,t} \quad (e)$$

Again subtracting equation (d) from equation (e) we obtain

$$\text{Log} (W_t / R_t) = \alpha_6 + (1 / \sigma) \log (K_t / L_t) - [(1 - \sigma) / \sigma] (\lambda l - \lambda k).t + \varepsilon_{6,t} \quad (f)$$

For our purposes these specifications are useful because running these regressions not only give us estimates of σ the estimate of σ can then be used to solve for the growth rate of capital and labor augmenting technical change in equations (a) and (b) respectively, and for the difference between labor and capital augmenting change in equation (c). Similarly estimates of σ and factor augmenting change can be obtained from equations (d), (e) and (f). Changes in the effective capital-labor over time t $d \log k = (\lambda K.t + d \log K) / (\lambda l.t + d \log L)$ can then be calculated and used to predict changes in labor's share (L_s) using equation (1) which re-specified in terms of the effective capital-labor ratio is:

$$. d \ln L_s = - (1 - L_s) \frac{\sigma-1}{\sigma} d \ln k \quad (4)$$

Data

Dale Jorgenson and his associates (2012) have developed measures of labor and capital inputs, services and prices. Their labor input measure combines data on work hours from the BLS and labor matrices of 192 demographic characteristics (gender, class of worker, age, education from the work of (Jorgenson, Ho and Samuels 2012)). Expressed as an index, it is thus a measure of the quantity of labor services. Given income of labor, the price of labor, (the wage rate) is then derived. Similarly, the capital-services measure used in the production function estimates reflects weighting of 90 different types of assets divided into five major categories: intellectual property, equipment, structures, inventories, and land.²¹ Given capital income (i.e. the net operating surplus, and the index of capital services) the price of capital (rate of profit) is then derived. Wherever possible, I use these data to estimate labor's share at the aggregate and industry level. However, for more disaggregated industry analysis I will use the data developed by the Bureau of Labor Statistics to explain total factor productivity at the industry level. These also provide estimates of output and capital and labor inputs and prices.

Antras (2004) uses an earlier version of the Jorgenson data. He obtains estimates of σ ranging between 0.641 and 0.892 and his estimates of net labor augmenting technical change ($\lambda_l - \lambda_k$) obtained from equations (c) and (f) are 3.08 and 3.15 percent

²¹ Intellectual property accounts are now a fifth category of major asset types that include the 90 individual assets. Intellectual property products are composed of three broad classes of assets: software (originally in a category called fixed business equipment and software), research and development, and artistic originals.

respectively. In the Jorgenson data, the ratio of capital to labor service inputs increases at an annual average rate of 2.46 log points between 1948 and 1998. Thus Antras' estimates provide a preview of the results to be reported below in that they imply that on average over his period of estimation the effective capital-labor ratio was a declining i.e. the annual growth rate of net labor-augmenting productivity change was about half a percent higher than the growth rate of the capital-labor ratio. The average of Antras' estimates of σ are 0.78. Over the 50 years, given the initial labor share of 58 percent in 1948, using equation (4) leads to a prediction of a small decline of -.031 log points in labor's share between 1948 and 1998. Labor share in income in the Jorgenson data was actually 62 percent in 1998. While not perfect, the estimates using this methodology thus do reasonably well in predicting the relative stability of labor's share in income over the five decade period.

[TABLE 5]

Table 5 uses the results of estimates of equations (c) and (f) for various periods. Each of these equations provides estimates of σ and after manipulation the annual difference between labor and capital augmenting technical change is extracted.²² The results are quite mixed and prior to 1980, the estimates of σ are not statistically significant. However, the σ estimates are significant for the period 1980 through 2010. In the K/L regression –specification (c) -- between 1980 and 2010, a statistically significant ($p = .05$) estimate of $\sigma = 0.187$ combined with net labor augmenting change

²² The Prais-Winston method is used to correct for auto-correlation.

of 2.4 implies a negative effective capital labor ratio and predicts a decline in labor share of 8.8 log points, which is close to the 8.4 log point decline that actually took place. In the W/R regression, specification (f) for the same period σ is higher but less than one and less significant ($p=.10$). Moreover, with a decline in the effective capital labor of $-.0287$, the result predicts a decline in labor share of 4.5 log points -- about half of the actual 8.4 log point fall. Thus, averaging the two equations suggests $\sigma = .54$, an annual decline in k -- the effective capital-labor ratio of 2 log points and a decline in labor share of 6.7 log points compared with the actual decline of 8.4 log points between 1980 and 2010.

Neither of the estimates of σ for the shorter period 1999 through 2010 are significant although taken together the equations do a reasonable job in predicting declines of $-.127$ and $-.059$ as compared with the actual decline of $-.09$. Indeed, the average of the two predictions with an estimate of $\sigma = 0.494$ and an annual change in k $-.0229$ leads to a prediction of $-.086$, which is almost precisely correct.

[TABLE 6]

The results explaining labor's share in manufacturing in Table 6 are much stronger than those for the aggregate economy. Most of the coefficients in both specifications are significant and in all periods they indicate that $\sigma < 1$. In addition, the results from the equations can be used to track the changes in the labor share over time. Over the period 1947 through 1980, the averaged results closely predict the slight increase (2.5 log points) in the labor share that actually took place. The equations then

capture the dramatic change that took place after 1980. Both specifications indicate accelerations in net labor augmenting technical change and lower σ 's after 1980. This combination of strong net labor augmenting technical change and $\sigma < 1$ leads to predictions of large declines in labor's share in income. On average the equations do well in explaining the decline especially over the past decade. Between 1980 and 2010 the actual decline of 37.1 log points exceeded the average predicted decline of 31.8 log points by 5.3 log points and between 1999 and 2010 the actual decline of 23.1 log points differs from the predicted decline by just 1.9 log points. In sum, it appears that this specification can explain the aggregate behavior of labor's share in US manufacturing since 1980.

[TABLE 7]

Using data that have been developed by the BLS for estimating productivity growth, that are similar but not the same as those from Jorgenson et. al, I have undertaken a similar exercise for individual US industries between 1987 and 2011 at the three digit NAICS level. I report both equations (c) and (f). Again, all regressions have been run using the Prais-Winston method for dealing with autocorrelation.

The shift share analysis indicated that three manufacturing industries had changes which together account for two thirds of the declining labor share within manufacturing. In all three industries, as reported in the Table 7, the estimated elasticities of substitution are very low and in all three, technical change is net labor augmenting and in excess of the increases in the actual capital-labor ratios. As a result,

very large declines in the labor shares in log points are predicted. The W/R specifications are more accurate and on average their predictions of declines of 53 log points are fairly close to the 43 percent actually experienced.

[TABLE 8]

In Table 8, the results of the K/L and W/R regressions for all 18 three-digit manufacturing industries are reported. As can be seen, while as shown by the shift-share analysis, the impacts were concentrated in the three industries discussed above, the declines in labor's share were quite pervasive across manufacturing. They occurred in 14 of the 18 industries and averaged 17.9 log points. In the K/L specification, only ten of the estimates of σ are statistically significant (seven though at the $P = .01$ level). In no case in the k/l regressions does σ come close to unity. Indeed, the significant estimates are extremely low, ranging from 0.0331 for transportation and 0.0499 for petroleum to 0.286 for fabricated metals. The W/R regressions are generally stronger with thirteen significant estimates. There are four estimates of σ greater than one, but none are significant, and the significant estimates have σ ranging between 0.09 for transportation to 0.755 for plastics. Strikingly, in all of the 18 industries when K/L is the dependent variable and in 15 of the 18 when W/R is the dependent variable, there is net labor augmenting technical change. Moreover, the magnitude of this change is greater than the increase in the capital-labor ratio in 14 cases with the K/L specification and 16 of the 18 cases with the W/R specification implying that in the vast majority of manufacturing industries the effective capital-labor ratio was declining. The model does

well qualitatively, although in some cases there are fairly large prediction errors that reflect the use of σ coefficients that are not significant (e.g. food, textiles, paper and especially plastics). On average, because of these errors, the k/l model over-predicts an average decline in labor share of 41.4 log points versus the actual average decline of 17.9 log points. However, the W/R regressions have much smaller forecast errors and on average predict a decline of 17.5 percent, which is remarkably close to the actual average decline of 17.8 percent. All told, therefore, it appears that in addition to the industries that had the largest impact on labor's share in manufacturing, there were more pervasive combinations of low substitution elasticities and declining effective capital-labor ratios that help explain why manufacturing experienced such large declines in labor's income share.

Finally, the information and mining sectors have played an important role in the declines in labor's share in income since 2000. Estimates using the Jorgenson data for mining, and posts and telecommunications (which include the information technology) sectors are reported below.

[TABLE 9]

For the period 1980 through 2010, while they are both able to account for almost the entire large decline in labor share of 32.6 log points in post and telecommunications, the estimates of σ from the two regressions are quite different. The prediction of the k/l regression is based on a low σ and a decline in the effective capital-labor ratio while the prediction using the W/R regression combines an estimate of $\sigma = 1.2$ with an estimate of

net capital augmenting technical change that is not, however, statistically significant. All told therefore, these are quite mixed results and lend some support both to the capital-deepening and the declining effective capital-labor explanations. Remarkably, however, despite the relatively small sample, both the equations explaining labor's share in the income in post and telecommunications do very well in explaining the large decline in labor's share after 1999. For this period, the regressions provide very similar, statistically significant estimates of σ of 0.8 and 0.9 from the K/L and W/R regressions respectively, and they both estimate very substantial increases in labor augmenting technical change. These in turn imply declining effective capital-labor ratios and result in predictions of the decline in labor's share of 26.4 log points with errors of just over 1 log point.

[TABLE 10]

The equations explaining mining and quarrying also provide an account of the declining labor share after 1980 and especially after 2000 that can be couched in terms of a low σ and a declining effective capital-labor ratio. The W/R regressions have higher levels of significance and smaller errors in prediction, especially in the recent period. What is interesting is that between 1947 through 1979, the W/R regressions explain the declining labor share on the basis of $\sigma > 1$, and capital deepening due to net capital augmenting technical change. These regressions also predict the declining labor share of 11.7 log points with only a small error. However, more recently especially after 2000, again as in the case of posts and telecommunications, both the k/l and W/R

regressions estimate σ to be low (.207 and .436 for the K/L and W/R regressions) and find a decline in the effective capital ratio to which a fall in actual capital-labor ratio contributes. The predictions of the W/R equation is very accurate (a decline of 18.2 log points versus an actual decline of 20.6), while the K/L regression also predicts a decline but with an error of 8.7 log points. All told, the earlier behavior of these sectors provides additional evidence that since 2000 the combination of a $\sigma < 1$ and declining effective capital-labor ratios explain the declines in labor's share in income.

In summary, for the period 1980 through 2010 there is overwhelming evidence that despite the measured increase in the capital-labor ratio, the effective capital-labor ratio has declined. This is the case for the total economy, for the manufacturing sector as a whole, for the three industries that together accounted for more than two thirds of the decline in labor share within manufacturing, for the majority of the three digit industries within manufacturing, as well as for the mining sector. It has also been the case for the posts and telecommunications sector since 2000.

Concluding Comments

The share of labor compensation in US national income has fallen to levels not seen since the 1950s. The decline has been especially concentrated within industries in manufacturing, mining, and information technology. In these sectors the explanation does not lie with relatively weak wage growth because globalization has reduced labor's bargaining power. Indeed, the rise in worker compensation in manufacturing has been similar to the rise elsewhere. Instead, it is rates of return in manufacturing that have increased. There is however considerable evidence that relatively rapid labor-

augmenting technical change in combination with $\sigma < 1$ has played the key role. This finding may seem paradoxical given the attention that has been focused on innovations in computers and automation, which might at first glance seem to be capital augmenting. However, in the Hicks framework, innovations are classified by their relative impact on the marginal products of capital and labor. It is quite possible that improvements in equipment and software could increase the marginal product of labor by more than they increase the marginal product of capital and thus induce a decline in the effective capital-labor ratio that is used to produce a given quantity of output.

It is also paradoxical to think that enhancing labor's productivity could reduce labor's share in income, and reduce wage/ rental ratios. However, this should not be surprising once it is recognized that technical change, which doubles each worker's productivity, is equivalent in supplying "effective labor" to doubling the number of workers in labor force. Just as, in the face of an inelastic demand, an increase in the supply of a product could reduce its price by enough to reduce total revenue, so too, could an increase in the effective labor-capital ratio reduce labor's share in income, and even wages per worker, when labor and capital are not easily substituted.

In the Hicks terminology, labor augmenting technical change, which at the margin encourages the use of labor rather than capital, is termed "capital-saving"; thus another implication of labor-augmenting technical change is that less capital is required to produce a given amount of output. This implies that if output is constrained by inadequate demand for example, investment would be weaker. The conventional wisdom is that there have been huge breakthroughs in information technology that

might have been expected to lead to unusually strong investment. Yet, as we have seen, investment has been weak. This could be part of the explanation.

The issue of whether capital and labor are gross complements or substitutes is crucial for determining the impact of measures that seek to affect the functional distribution of income. As noted, the leading proponent of these factors as substitutes, Thomas Piketty (2014), argues that to address a development that he regards as inequitable, capital formation should be slowed by higher taxes on capital and wealth. However, this study suggests such measures could be counterproductive and actually reduce labor's share in income by further lowering the effective capital-labor ratio. Instead, the evidence here corroborates many others in concluding that in the United States the elasticity of substitution between capital and labor is less than one. It has also found that in the face of this low elasticity, the cause of labor's falling share recently is the weakness of investment in the face of faster labor-augmenting technical change, rather than more capital deepening in the sense of rising capital-output ratios. This suggests that measures that boost investment and capital formation would lead to higher wages, raise labor's share in income, and reduce income inequality.

A tax system that could achieve such a goal might be a progressive consumption tax. This would boost investment by removing the taxes on capital while at the same time allow income to be redistributed by imposing higher taxes on those with higher levels of consumption. Such a system would also allow the United States to become more a more competitive location for international investment.

While the conclusions of this paper are salient for debates about the causes of some forms of income inequality these results are sufficiently important that they

should be the subject of further research. This paper has applied Occam's razor to explain changes in the functional distribution of income and finds considerable evidence to support an explanation that points to the combination of σ 's < 1 and declining effective capital-labor ratios. The simplest neoclassical explanation of the functional distribution of income thus appears to explain the facts. However, to produce these results many simplifying assumptions have been made. These include treating factors as homogenous, assuming competitive conditions (i.e. no variations in markups), constant returns to scale, constant elasticities of substitution between labor and capital, no adjustment costs and frictions, and factor-augmenting technical change that is characterized by constant exponential parameters. In addition, the estimates are derived using fairly primitive econometric methods, relying on ordinary least squares regressions and corrections for autocorrelation using the PRAIS method, rather than employing time series and/or systems estimation methods.

Many of these assumptions and methodological choices deserve further scrutiny. The measures of capital and labor developed by Jorgenson et. al. (2012) used in most of the regressions have been derived by aggregating inputs with fundamentally different characteristics. The measure of labor services, for example, reflects a weighting of 192 work-hour categories that are distinguished by gender, class of worker, age and education. The measure of capital-services reflects a weighting of 90 different types of assets divided into major categories that include equipment, structures, inventories, land and intellectual property, which in turn aggregates software, research and development and artistic originals.

However, there is considerable evidence that the substitution possibilities between different types of capital and labor are not the same. For example, capital is often viewed as complementary to skilled labor but substitutable with unskilled labor (Griliches 1969, Krusell, et al. 2000). In addition, different types of capital such as equipment and structures are also viewed as having different substitution possibilities both with each other and with other factors. These differences imply that the composition of capital and labor (i.e. relative supplies of different types of labor and capital) could affect their aggregate substitution possibilities. For example, as Elsby et al. (2013) show, if capital and skilled labor are less substitutable than capital and unskilled labor, an increase in the share of skilled workers in the labor force could result in a decline in the overall σ between capital and labor.²³

In addition, with models with more than two factors, the predictions about the impact of technical change on the functional distribution of income could be affected by the degree to which technical change augments particular types of capital and labor. Given the large number of studies that have concluded that skill-biased technical change has been a powerful source of the rising skill premium in the United States, there are good reasons that further disaggregation of the nature of technical change could be important.

In empirical work that seeks to capture these effects, the results will be affected by the manner in which the production function is modelled and the degree of substitution possibilities between different types of labor and capital that are assumed or calibrated. It is customary to try to capture this greater realism by building models that use nested production functions. For example, Krusell et al. (2000) undertake an

²³ See Elsby et al. (2013:31-33) for a discussion of the impact of changes in skill-mix on σ .

exercise with four factors of production (structures, equipment, skilled and unskilled labor). At the highest stage of aggregation they specify a Cobb-Douglas production function that has one type of capital – structures – and a composite CES, which in turn combines two underlying CES production functions. One of these is comprised of skilled labor and equipment that are assumed to be complements, and this function is in turn nested in another function in which both skilled labor and equipment are assumed to be substitutes for unskilled labor. Arpai et al. (2009) similarly explain changes in European factors using such nested production functions. In their model, since capital and skilled labor are complements, capital augmenting technical progress has the effect of raising the skill premium. However, since unskilled labor is highly substitutable with the composite of capital and skilled labor, skilled capital-augmenting progress also leads to a decline in the overall labor share. As Atkinson (2009) discusses²⁴ and these examples indicate, dealing with more than two factors adds considerable complexity to the analysis and entails making additional assumptions in order to ensure tractability and apply calibration methods. Moreover, as he discusses and as shown by Blackorby and Russell (1989) we cannot in general talk about two factors being complementary without specifying the direction of price change envisaged.

Factor diversity is not the only source of additional realism that might be relevant. Other sources of change that have been omitted could be important determinants of the functional distribution of income. As incorporated in their explanations of changes in labor share in Europe, for example, research by Bentolia and Saint-Paul (2003) and Arpai et al. (2009) explicitly considers the potential role of changes in markups, the role of intermediate input prices, adjustment costs and changes

²⁴ Ibid p. 11-12.

in the price and wage determining processes. Rognlie (2015) also finds an important role for mark-up changes. Combining the view that capital's share is higher because of higher mark-ups with the finding here presents a puzzle, since it might have been expected that increased globalization would reduce rather than raise mark-ups. However, this is an issue that needs further exploration.

In addition, a considerable literature has been devoted to developing econometric methodologies for estimating the elasticity of substitution that may be more suitable than those applied here. Antras (2004) and several other papers that apply his methodology, use Generalized Instrumental Variables to correct for the endogeneity of his regressors as well as time series methods to correct for non-stationarity and the possibility of spurious correlations. Klump et al. (2007) use normalized production functions as recommended by Klump and De La Grandville (2000). They also allow for more complex functional forms for factor augmenting technical change that can accommodate exponential, logarithmic, and hyperbolic growth as special cases. Their estimation is undertaken using a three equation supply side system, which includes both the estimation of the production function and factor income equations and contains cross-equation parameter restrictions. León-Ledesma et al. (2010) demonstrate using Monte-Carlo methods that this combination of normalization and jointly modeling the production function and first order conditions produces superior estimates. Additional research using these techniques should be undertaken to explore whether the conclusions obtained here are robust. Nonetheless, despite all these potential complications, as a first approximation, contrary to the views of many, the canonical

neoclassical model of the functional distribution of income appears to work remarkably well.

Bibliography

Acemoglu, Daron. "Directed Technical Change." *Review of Economic Studies* 69, no. 4 (2002): 781-809.

Acemoglu, Daron. "Labor- And Capital-Augmenting Technical Change." *Journal of the European Economic Association* 1, no. 1 (2003): 1-37.

Acemoglu, Daron, and James A. Robinson. "The Rise and Decline of General Laws of Capitalism." *NBER Working Paper 20766*, 2014.

Acemoglu, Daron, and Veronica Guerrieri. "Capital Deepening and Non-balanced Economic Growth." *Journal of Political Economy* 116, no. 3 (2008): 467-498.

Ahsan, Reshad N., and Devashish Mitra. "Trade liberalization and labor's slice of the pie: Evidence from Indian firms." *Journal of Development Economics* 108 (2014): 1-16.

Antras, Pol. "Is the U.S. Aggregate Production Function Cobb-Douglas? New Estimates of the Elasticity of Substitution." *B.E. Journal of Macroeconomics* 4, no. 1 (2004).

Arpaia, Alfonso, Esther Perez, and Karl Pichelmann. "Understanding Labour's Income Share Dynamics in Europe." *European Economy Economics Paper No. 379*, European Commission, 2009.

Arrow, Kenneth J., Hollis B. Chenery, B. S. Minhas, and Robert M. Solow. "Capital-Labor Substitution and Economic Efficiency." *Review of Economics and Statistics* 43 (1961): 225-250.

Atkinson, A. B. "Factor shares: the principal problem of political economy?" *Oxford Review of Economic Policy* 25, no. 1 (2009): 3-16.

Bentolia, Samuel, and Gilles Saint-Paul. "Explaining Movements in the Labor Share." *Contributions to Macroeconomics* 3, no. 1 (2003).

Berndt, E. "Reconciling alternative estimates of the elasticity of substitution." *Review of Economics and Statistics* 58, no. 1 (1976): 81-114.

Bertoli, Simone, and Francesco Farina. "The functional distribution of income: a review of the theoretical literature and of the empirical evidence around its recent

pattern in European countries." *University of Siena DEPFID Working Papers*, September 2007.

Blackorby, C., and R. R. Russell. "Will the Real Elasticity of Substitution Please Stand Up? (A Comparison of the Allen/Uzawa and Morishima elasticities)." *American Economic Review* 79 (1989): 882-8.

Blanchard, O. "European unemployment: the evolution of facts and ideas." *Economic Policy*, January 2006: 5-59.

Blanchard, Olivier. "The Medium Run." *Brookings Papers on Economic Activity* 2 (1997): 89-158.

Bridgman, Benjamin. "Is Labor's Loss Capital's Gain? Gross versus Net Labor Shares." *Bureau of Economic Analysis*, June 2014.

Brock, Ellen, and Sabien Dobbelaere. "Has international trade affected workers bargaining power?" *Review of World Economics* 142, no. 2 (2006): 233-266.

Burtless, G. "Income Progress Across the American Income Distribution 2000–2005." *Testimony for the Committee on Finance, US Senate*, May 2007.

Chirinko, Robert S. "The Long and Short of It." *Journal of Macroeconomics* 30 (2008): 671-686.

Chirinko, Robert S., and Debdulal Mallick. "The Substitution Elasticity, Factor Shares, Long-Run Growth, and the Low-Frequency Panel Model." *CESifo Working Paper Series No. 4895*, October 2014.

Cobb, Charles W., and Paul H. Douglas. "A Theory of Production." *The American Economic Review* 18, no. 1 (1928): 139-165.

David, Paul A., and Th. Van De Klundert. "Biased Efficiency Growth and Capital-Labor Substitution in the U.S., 1899-1960." *American Economic Review* 55 (1965): 357-393.

Dew-Becker, Ian, and Robert J. Gordon. "Where did the Productivity Growth Go? Inflation Dynamics and the Distribution of Income." *NBER Working Paper No. 11842*, 2005.

Elsby, Michael W. L., Bart Hobbijn, and Aysegul Sahin. "The Decline of the U.S. Labor Share." *Brookings Papers on Economic Activity*, September 2013.

Fragiadakis, Kostas, Leonidas Paroussos, Nikos Kouvaritakis, and Pantelis Capros. *A Multi – Country Econometric Estimation of the Constant Elasticity of Substitution*. Athens: National Technical University of Athens, Paper prepared for WIOD project, 2012.

Griliches, Zvi. "Capital-Skill Complementarity." *Review of Economics and Statistics* 51, no. 4 (1969): 465-68.

Hamermesh, Daniel S. *Labor Demand*. Princeton, NJ: Princeton University Press, 1993.

Harrison, Ann E. "Has Globalization Eroded Labor's Share? Some Cross-Country Evidence." *UC Berkeley and NBER*, April 2005.

Hicks, John, R. *The Theory of Wages*. 2nd. London, UK: MacMillan, 1963.

Jones, Charles I, and Dean Scrimgeour. "The Steady-State Growth Theorem: A Comment on Uzawa (1961)." *NBER Working Paper No. 10921*, November 2004.

Jorgenson, Dale W., Mun S. Ho, and Jon Samuels. "A Prototype Industry-Level Production Account for the United States, 1947-2010." *Second World KLEMS Conference*. Cambridge, MA: Harvard University, 2012.

Juselius, Mikael. "Long-run relationships between labor and capital: Indirect evidence on the elasticity of substitution." *Journal of Macroeconomics* 30, no. 2 (June 2008): 739-756.

Kaldor, Nicholas. "Capital accumulation and economic growth." In *The Theory of Capital*, edited by F. Lutz. London, UK: MacMillan, 1961.

Kalt, Joseph P. "Technological Change and Factor Substitution in the United States: 1929-1967." *International Economic Review* 19, no. 3 (October 1978): 761-775.

Kamal, Fariha, Mary E. Lovely, and Devashish Mitra. "Trade Liberalization and Labor Shares in China." *US Census Bureau Center for Economic Studies Paper No. CES-WP-14-24*, May 2014.

Karabarbounis, Loukas, and Brent Nieman. "The Global Decline of the Labor Share." *Quarterly Journal of Economics*, 2014: 61-103.

Keynes, J.M. "Relative movements of real wages and output." *Economic Journal* 49, no. 193 (1939): 34-51.

Klump, R., and O. De La Grandville. "Economic growth and the elasticity of substitution: Two theorems and some suggestions." *American Economic Review* 90, no. 1 (March 2000): 282-291.

Klump, R., P. McAdam, and A. Willman. "Factor substitution and factor augmenting technical progress in the US: A normalized supply-side system approach." *Review of Economics and Statistics* 89, no. 1 (February 2007): 183-192.

Kraemer, Hagen M. "The Alleged Stability of the Labour Share of Income in Macroeconomic Theories of Income Distribution." *IMK Working Paper*, August 2010.

Krusell, Per, Lee Ohanian, Victor Rios-Rull, and Giovanni Violante. "Capital Skill Complementary and Inequality." *Econometrica* 68 (2000): 1029-1053.

Lawrence, Robert Z. *Blue Collar Blues*. Washington, D.C.: The Peterson Institute for International Economics, 2008.

León-Ledesma, Miguel A., Peter McAdam, and Alpo Willman. "Identifying the Elasticity of Substitution with Biased Technical Change." *American Economic Review* 100 (September 2010): 1330-57.

Mallick, Debdulal. "The role of the elasticity of substitution in economic growth: A cross-country investigation." *Labour Economics* 19 (2012): 682-694.

Mankiw, N. Gregory. *Macroeconomics*. 6th. Worth Publishers, 2007.

Oberfield, Ezra, and Devesh Raval. "Micro Data and Macro Technology." *NBER Working Paper No. 20452*, September 2014.

Piketty, Thomas. *Capital in the Twenty-First Century*. Belknap: Cambridge, MA, 2014.

Piketty, Thomas, and Gabriel Zucman. "Capital is Back: Wealth-Income Ratios in Rich Countries 1700-2010." *Working Paper*, 2013.

Robinson, Joan. *Economics of Imperfect Competition*. London, UK: MacMillan, 1932.

Rognlie, Matthew. "A Note on Piketty and Diminishing Returns to Capital." *Working Paper*, June 2014.

Rognlie, Matthew. "Deciphering the fall and rise in the net capital share." *Brookings Papers on Economic Activity*, March 2015.

Schneider, Dorothee. "The Labor Share: A Review of Theory and Evidence." *SFB 649 Discussion Paper 2011-069, Humboldt-Universität zu Berlin*, October 2011.

Solow, Robert M. "A skeptical note on the constancy of relative shares." *American Economic Review*, 1958: 618-631.

Summers, Lawrence H. "The Inequality Puzzle." *Democracy*, no. 33 (Summer 2014).

Uzawa, Hirofumi. "Neutral Inventions and the Stability of Growth Equilibrium." *The Review of Economic Studies* 28, no. 2 (1961): 117-124.

Wei, Taoyuan. "Estimates of substitution elasticities and factor-augmented technical changes." *Center for International Climate and Environmental Research (CICERO)*, March 2014.

Young, Andrew T. "US Elasticities of Substitution and Factor-Augmentation at the Industry Level." *Working Paper, West Virginia University*, 2010.

TABLES

Table 1: Shift-share analysis of sectoral changes in labor share 2000 to 2012

	GDP Share		Labor Compensation Share		Change	Total Impact due to:			Industry Impact on Decline %
	2000	2012	2000	2012		Between Sectors	Within Sectors		
Agriculture	1.0	1.2	0.31	0.21	-0.095	-0.002	-0.001	-0.001	4.9
Mining	1.1	2.6	0.33	0.21	-0.115	-0.007	-0.004	-0.003	17.6
Manufacturing	15.1	12.5	0.59	0.46	-0.135	-0.017	-0.001	-0.017	44.4
Utilities	1.8	1.7	0.28	0.26	-0.020	0.000	0.000	0.000	0.4
Construction	4.5	3.6	0.66	0.64	-0.030	-0.002	-0.001	-0.001	4.9
Wholesale trade	6.1	5.9	0.52	0.48	-0.048	-0.003	0.000	-0.003	7.2
Retail trade	6.8	5.7	0.58	0.55	-0.030	-0.002	0.000	-0.002	4.8
Transportation and warehousing	3.0	2.9	0.67	0.58	-0.085	-0.003	0.000	-0.002	6.5
Information	4.6	4.8	0.52	0.35	-0.171	-0.008	0.000	-0.008	21.2
Finance, insurance, real estate, rental, and leasing	19.4	19.5	0.25	0.24	-0.010	-0.003	0.000	-0.002	6.4
Professional and business services	10.8	11.9	0.75	0.71	-0.032	-0.002	0.002	-0.004	4.8
Educational services, health care, and social assistance	6.6	8.2	0.83	0.83	0.004	0.004	0.004	0.000	-11.4
Arts, entertainment, recreation, accommodation, and food	3.8	3.7	0.60	0.62	0.020	0.001	0.000	0.001	-1.8
Other services, except government	2.7	2.2	0.61	0.71	0.100	0.002	0.000	0.002	-4.9
Government	12.9	13.5	0.79	0.80	0.006	0.002	0.001	0.001	-5.0
GDP	100.0	100.0	0.57	0.53		-0.039	0.001	-0.040	

Source BEA.Gov

Table 2: Shift-share analysis of sectoral changes in labor share 1987-2011 (unrevised data)

	GDP Share		Labor Compensation Share		Change	Total Impact due to:			Industry Impact on Decline %
	1987	2011	1987	2011		Between Sectors	Within Sectors		
Agriculture, forestry, fishing, and hunting	1.66	1.15	0.202	0.251	0.050	0.002	0.002	0.001	-9.2
Mining	1.54	1.92	0.404	0.278	-0.126	-0.003	-0.001	-0.002	11.4
Utilities	2.66	1.98	0.245	0.239	-0.005	0.002	0.002	0.000	-8.0
Construction	4.44	3.51	0.683	0.686	0.004	-0.001	-0.001	0.000	3.1
Manufacturing	17.38	11.49	0.678	0.523	-0.156	-0.024	-0.006	-0.018	87.9
Wholesale trade	6.03	5.61	0.538	0.518	-0.020	-0.001	0.000	-0.001	3.5
Retail trade	7.30	6.01	0.603	0.551	-0.051	-0.003	0.000	-0.003	12.5
Transportation and warehousing	3.22	2.97	0.687	0.590	-0.097	-0.003	0.000	-0.003	11.6
Information	4.17	4.29	0.450	0.403	-0.047	-0.002	0.000	-0.002	8.0
Finance, insurance, real estate, rental, and leasing	17.95	20.29	0.233	0.236	0.003	-0.007	-0.008	0.001	27.4
Professional and business services	8.12	12.50	0.667	0.687	0.020	0.006	0.004	0.003	-23.8
Educational services, health care, and social assistance	5.86	8.70	0.800	0.818	0.018	0.008	0.006	0.002	-28.9
Arts, entertainment, recreation, accommodation, and food services	3.22	3.92	0.618	0.589	-0.029	-0.001	0.000	-0.001	3.1
Other services, except government	2.56	2.45	0.610	0.664	0.054	0.001	0.000	0.001	-4.7
Government	13.90	13.23	0.848	0.849	0.001	-0.002	-0.002	0.000	6.2
GDP	100.00	100.00	0.578	0.551	-0.027	-0.027	-0.003	-0.024	100.0

Source BEA.Gov

Table 3: Shift-share analysis of changes in labor share in manufacturing 1987 to 2011 (unrevised data)

	Value Share		Labor Compensation Share		change	Impact	due to:		% of total Impact
	1987	2011	1987	2011			Between Industry Shifts	Within Industry Shifts	
Petroleum and coal products	2.3	9.8	0.432	0.122	-0.309	-0.049	-0.018	-0.030	31.3
Chemical products	9.9	14.6	0.496	0.352	-0.144	-0.030	-0.009	-0.021	19.1
Computer and electronic products	10.3	13.1	0.817	0.577	-0.240	-0.028	0.004	-0.031	17.8
Food and beverage and tobacco products	10.8	12.4	0.503	0.420	-0.082	-0.013	-0.003	-0.010	8.3
Machinery	8.0	7.6	0.755	0.641	-0.114	-0.009	0.000	-0.009	5.8
Primary metals	3.9	2.9	0.798	0.619	-0.178	-0.006	-0.001	-0.005	4.1
Miscellaneous manufacturing	2.7	4.6	0.704	0.579	-0.125	-0.005	0.000	-0.006	3.4
Motor vehicles, bodies and trailers, and parts	7.7	4.4	0.755	0.710	-0.045	-0.005	-0.003	-0.002	2.9
Plastics and rubber products	3.9	4.0	0.670	0.560	-0.110	-0.004	0.000	-0.004	2.8
Textile mills and textile product mills	2.6	1.1	0.776	0.621	-0.155	-0.003	-0.001	-0.002	2.0
Apparel and leather and allied products	2.7	0.7	0.779	0.720	-0.058	-0.002	-0.002	0.000	1.6
Furniture and related products	2.2	1.5	0.780	0.668	-0.112	-0.002	-0.001	-0.002	1.5
Printing and related support activities	3.2	1.8	0.828	0.833	0.005	-0.002	-0.002	0.000	1.2
Electrical equipment, appliances, and components	4.2	2.7	0.671	0.658	-0.012	0.000	0.000	0.000	0.1
Fabricated metal products	8.3	7.1	0.699	0.700	0.001	0.000	0.000	0.000	0.1
Nonmetallic mineral products	2.9	1.9	0.696	0.713	0.018	0.000	0.000	0.000	-0.1
Paper products	4.7	3.1	0.593	0.562	-0.031	0.000	0.001	-0.001	-0.3
Wood products	2.4	1.3	0.655	0.721	0.066	0.001	0.000	0.001	-0.7
Other transportation equipment	7.2	5.4	0.702	0.738	0.036	0.002	0.000	0.002	-1.0
Manufacturing	100.0	100.0	0.678	0.523	-0.156	-0.155	-0.035	-0.121	100.0

Source BEA.Gov

Table 4: Shift-share decomposition of changes in labor payroll share in manufacturing

	1980	2000	2009	Change in share 1980-2009	percent of change	Change in share 2000-2009	percent of change
Payroll share in manufacturing value-added	0.411	0.313	0.270	-0.139	100.000	-0.043	100.000
due to:							
(1) changes in 6-digit industry shares				-0.023	16.2	-0.010	22.5
(2) within 6-digit industry share changes				-0.116	83.8	-0.033	77.5

Source: NBER-CES Manufacturing Industry Database (473 6-digit industries)

Table 5: Total industry

K/L Regression	Regression Result			Effective Capital Labor Ratio			Change in Labor Share		
	$1/\sigma$	σ	Year Coefficient	$\lambda l - \lambda k$	$d\log(K/L)$	$d\log(k)$	Predicted	Actual	Error
1947-1979		0.136	0.0227***	0.026	0.024	-0.002	-0.161	0.166	0.327
1980-2010		0.187**	0.0196***	0.024	0.022	-0.002	-0.088	-0.084	0.004
1999-2010		0.100	0.0230***	0.026	0.023	-0.003	-0.127	-0.090	0.038
w/r Regression									
1947-1979	0.720	1.389	0.015	0.052	0.024	-0.027	0.101	0.166	0.064
1980-2010	1.125*	0.889	-0.006	0.051	0.022	-0.029	-0.045	-0.084	-0.039
1999-2010	0.758	1.319	-0.007	-0.028	0.023	0.051	-0.059	-0.090	-0.030
Average									
1947-1979		0.762	0.019	0.039	0.024	-0.015	-0.030	0.166	0.196
1980-2010		0.538	0.007	0.038	0.022	-0.015	-0.066	-0.084	-0.018
1999-2010		0.710	0.008	-0.001	0.023	0.024	-0.093	-0.090	0.004

Table 6: Total manufacturing

K/L Regression	Regression Result			Effective Capital Labor Ratio			Change in Labor Share		
	$1/\sigma$	σ	Year Coefficient	$\lambda l - \lambda k$	$d\log(K/L)$	$d\log(k)$	Predicted	Actual	Error
1947-1979		0.423***	0.0196***	0.034	0.034	0.000	-0.001	0.025	0.026
1980-2010		0.311***	0.0324***	0.047	0.035	-0.012	-0.328	-0.371	-0.043
1999-2010		0.275*	0.0412***	0.057	0.040	-0.017	-0.215	-0.231	-0.016
w/r Regression									
1947-1979	1.039***	0.962	0.003	-0.079	0.034	0.113	0.058	0.025	-0.033
1980-2010	1.411***	0.709	-0.0393**	0.096	0.035	-0.061	-0.308	-0.371	-0.062
1999-2010	1.791**	0.558	-0.0749**	0.095	0.040	-0.055	-0.208	-0.231	-0.023
Average									
1947-1979		0.693	0.011	-0.023	0.034	0.057	0.029	0.025	-0.004
1980-2010		0.510	-0.003	0.071	0.035	-0.036	-0.318	-0.371	-0.053
1999-2010		0.417	-0.017	0.076	0.040	-0.036	-0.212	-0.231	-0.019

Table 7: Manufacturing industries with largest impacts 1987-2011

K/L Regression	Regression Result			Effective Capital Labor Ratio			Change in Labor Share		
	$1/\sigma$	σ	Year Coefficient	$\lambda l - \lambda k$	$d\log(K/L)$	$d\log(k)$	Predicted	Actual	Error
Petroleum		0.0499***	0.0257***	0.027	0.023	-0.004	-0.772	-0.444	0.328
Chemicals		0.049	0.0331***	0.035	0.031	-0.004	-0.771	-0.318	0.452
Computer and Electronic Product		0.0803***	0.0631***	0.069	0.061	-0.008	-0.893	-0.543	0.350
w/r Regression									
Petroleum	6.981***	0.143	-0.201***	0.034	0.023	-0.011	-0.635	-0.444	0.191
Chemicals	2.006**	0.499	-0.0557*	0.055	0.031	-0.025	-0.247	-0.318	-0.071
Computer and Electronic Product	4.463***	0.224	-0.280***	0.081	0.061	-0.020	-0.694	-0.543	0.151
AVERAGE									
Petroleum			0.097	0.030	0.023	-0.007	-0.703	-0.444	0.259
Chemicals			0.274	0.045	0.031	-0.014	-0.509	-0.318	0.190
Computer and Electronic Product			0.152	0.075	0.061	-0.014	-0.793	-0.543	0.251

Table 8: 18 3-digit manufacturing industries

K/L Regression 1987-2011 Industry Name	Regression Result		Effective Capital Labor Ratio			Change in Labor Share			
	$1/\sigma$	σ Year Coefficient	$\lambda l - \lambda k$	$d\log(K/L)$	$d\log(k)$	Predicted	Actual	Error	
1 Food		0.003	0.0124***	0.012	0.012	-0.001	-2.856	-0.147	2.709
2 Textiles		0.039	0.0334***	0.035	0.030	-0.004	-1.085	-0.314	0.771
3 Apparel and Leather		0.142**	0.0579***	0.067	0.061	-0.007	-0.398	-0.116	0.281
4 Wood		0.0994**	0.0199**	0.022	0.023	0.001	0.112	0.207	0.095
5 Paper		0.027	0.0215***	0.022	0.020	-0.002	-0.836	-0.086	0.750
6 Printing		0.087	0.0301***	0.033	0.031	-0.002	-0.228	-0.059	0.169
7 Petroleum		0.0499***	0.0257***	0.027	0.023	-0.004	-0.772	-0.444	0.328
8 Chemicals		0.049	0.0331***	0.035	0.031	-0.004	-0.771	-0.318	0.452
9 Plastics		-0.010	0.0321***	0.032	0.028	-0.004	4.203	-0.246	-4.450
10 Nonmetallic Minerals		0.255***	0.0142***	0.019	0.021	0.002	0.047	0.037	-0.011
11 Primary Metals		0.127***	0.0170***	0.019	0.012	-0.007	-0.500	-0.313	0.188
12 Fabricated Metals		0.286***	0.0151***	0.021	0.016	-0.005	-0.130	0.009	0.139
13 Machinery		0.254***	0.0338***	0.045	0.034	-0.011	-0.323	-0.287	0.036
14 Computer and Electronic Product		0.0803***	0.0631***	0.069	0.061	-0.008	-0.893	-0.543	0.350
15 Electrical Equipment		0.062	0.0349***	0.037	0.033	-0.004	-0.572	-0.089	0.484
16 Transportation		0.0331***	0.0410***	0.042	0.039	-0.003	-1.020	-0.008	1.011
17 Furniture		0.0687*	0.0340***	0.037	0.031	-0.005	-0.742	-0.237	0.505
18 Miscellaneous		0.043	0.0296***	0.031	0.028	-0.003	-0.667	-0.268	0.399

w/r Regression 1987-2011 Industry Name	Regression Result		Effective Capital Labor Ratio			Change in Labor Share			
	$1/\sigma$	σ Year Coefficient	$\lambda l - \lambda k$	$d\log(K/L)$	$d\log(k)$	Predicted	Actual	Error	
1 Food	0.161	6.211	0.002	0.003	0.012	0.009	-0.077	-0.147	-0.070
2 Textiles	0.519	1.927	-0.009	-0.019	0.030	0.049	-0.238	-0.314	-0.076
3 Apparel and Leather	1.383***	0.723	-0.031	0.080	0.061	-0.019	-0.072	-0.116	-0.044
4 Wood	1.406*	0.711	0.020	-0.049	0.023	0.073	0.295	0.207	-0.088
5 Paper	3.601***	0.278	-0.0631***	0.024	0.020	-0.005	-0.117	-0.086	0.031
6 Printing	0.278	3.597	0.0234*	0.032	0.031	-0.002	0.012	-0.059	-0.070
7 Petroleum	6.981***	0.143	-0.201***	0.034	0.023	-0.011	-0.635	-0.444	0.191
8 Chemicals	2.006**	0.499	-0.0557*	0.055	0.031	-0.025	-0.247	-0.318	-0.071
9 Plastics	1.324***	0.755	-0.026	0.079	0.028	-0.051	-0.165	-0.246	-0.081
10 Nonmetallic Minerals	2.879***	0.347	-0.0348***	0.019	0.021	0.002	0.041	0.037	-0.004
11 Primary Metals	3.707***	0.270	-0.0734***	0.027	0.012	-0.015	-0.404	-0.313	0.091
12 Fabricated Metals	1.602***	0.624	-0.013	0.022	0.016	-0.006	-0.034	0.009	0.043
13 Machinery	2.233***	0.448	-0.0639***	0.052	0.034	-0.018	-0.216	-0.287	-0.071
14 Computer and Electronic	4.463***	0.224	-0.280***	0.081	0.061	-0.020	-0.694	-0.543	0.151
15 Electrical Equipment	1.068	0.936	0.006	-0.086	0.033	0.120	0.081	-0.089	-0.170
16 Transportation	10.17***	0.098	-0.385***	0.042	0.039	-0.003	-0.282	-0.008	0.273
17 Furniture	2.542***	0.393	-0.0740***	0.048	0.031	-0.017	-0.261	-0.237	0.024
18 Miscellaneous	0.441	2.268	0.002	0.004	0.028	0.024	-0.132	-0.268	-0.136

Table 9: Post & telecommunications

K/L Regression	Regression Results			Effective Capital Labor Ratio			Change in Labor Share		
	$1/\sigma$	σ	Year Coefficient	$\lambda l - \lambda k$	$d\log(K/L)$	$d\log(k)$	Predicted	Actual	Error
1947-1979		-0.047	0.0504***	0.048	0.047	-0.001	0.270	-0.230	-0.500
1980-2010		0.186*	0.0511***	0.063	0.057	-0.006	-0.320	-0.326	-0.006
1999-2010		0.798***	0.0540***	0.267	0.063	-0.204	-0.248	-0.264	-0.015
w/r Regression									
1947-1979	-0.498	-2.008	0.0497*	0.033	0.047	0.014	-0.278	-0.230	0.048
1980-2010	0.820*	1.220	-0.011	-0.061	0.057	0.118	-0.263	-0.326	-0.063
1999-2010	1.112***	0.899	-0.0595***	0.531	0.063	-0.468	-0.252	-0.264	-0.012
1947-1979		-1.0275		0.041	0.047	0.007	-0.004	-0.230	-0.226
1980-2010		0.703		0.001	0.057	0.056	-0.292	-0.326	-0.035
1999-2010		0.8485		0.399	0.063	-0.336	-0.250	-0.264	-0.014

Table 10: Mining and quarrying

K/L Regression	Regression Results			Effective Capital Labor Ratio			Change in Labor Share		
	$1/\sigma$	σ	Year Coefficient	$\lambda_l - \lambda_k$	$d\log(K/L)$	$d\log(k)$	Predicted	Actual	Error
1947-1979		0.132*	0.0340***	0.039	0.036	-0.003	-0.284	-0.117	0.166
1980-2010		0.307***	0.0182***	0.026	0.023	-0.004	-0.099	-0.077	0.023
1999-2010		0.207*	-0.003	-0.003	-0.010	-0.006	-0.119	-0.206	-0.087
w/r Regression									
1947-1979	0.952***	1.050	-0.007	-0.135	0.036	0.171	-0.109	-0.117	-0.009
1980-2010	1.934***	0.517	-0.0320***	0.034	0.023	-0.012	-0.134	-0.077	0.057
1999-2010	2.293*	0.436	-0.025	0.019	-0.010	-0.029	-0.182	-0.206	-0.024
AVERAGE									
1947-1979		0.59121		-0.048	0.036	0.084	-0.196	-0.117	0.079
1980-2010		0.41203		0.030	0.023	-0.008	-0.117	-0.077	0.040
1999-2010		0.32155		0.008	-0.010	-0.018	-0.151	-0.206	-0.055

FIGURES

Figure 1: Share of labor compensation in US national income 1969 to 2013

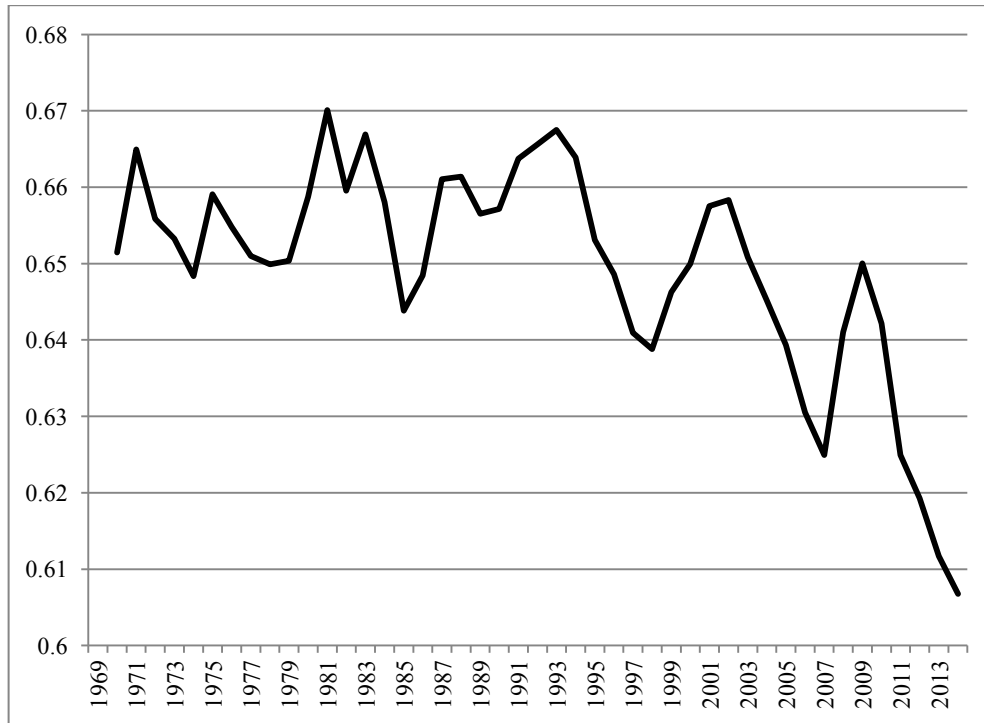


Figure 2: Share of labor compensation in income (various measures) 1929 to 2014

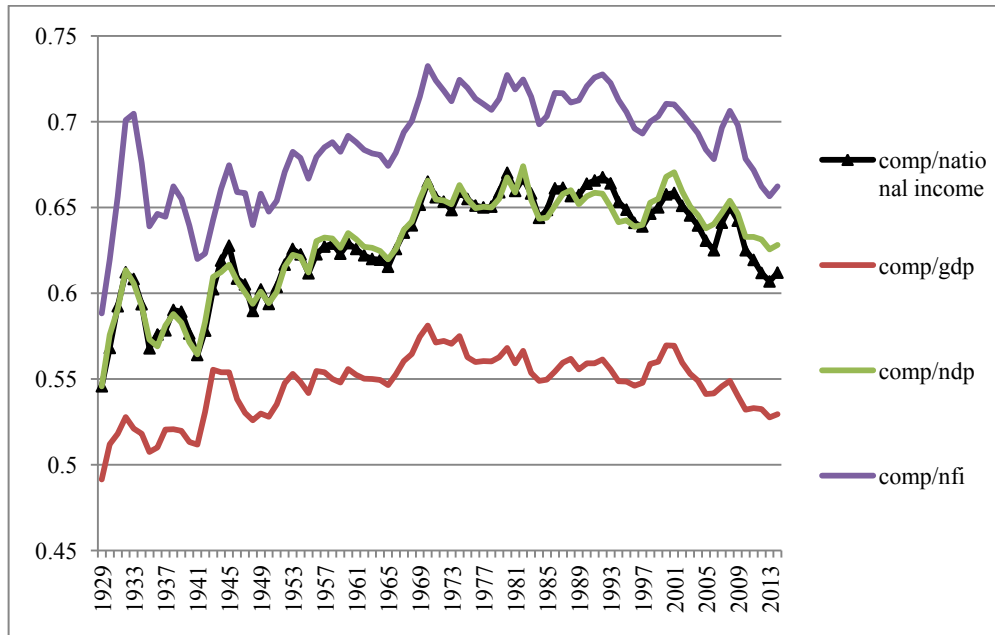


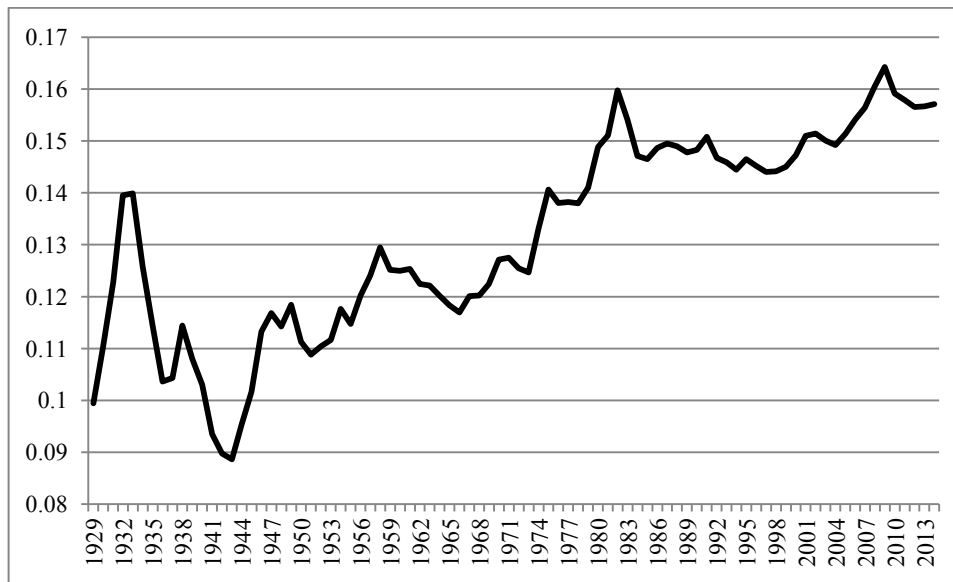
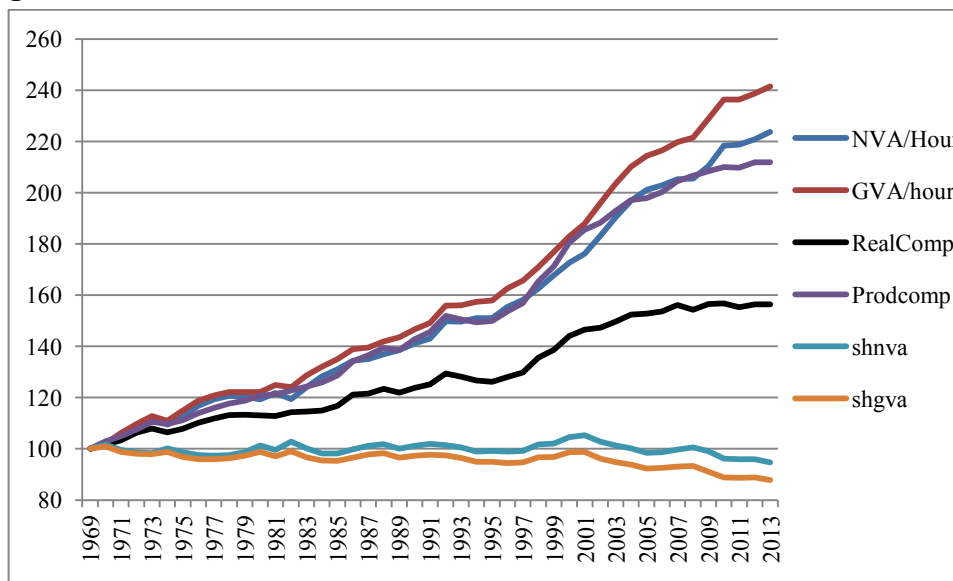
Figure 3: Depreciation/GDP**Figure 4: Business sector: Output per hour, real compensation, labor share in gross and net value-added, 1969-2013**

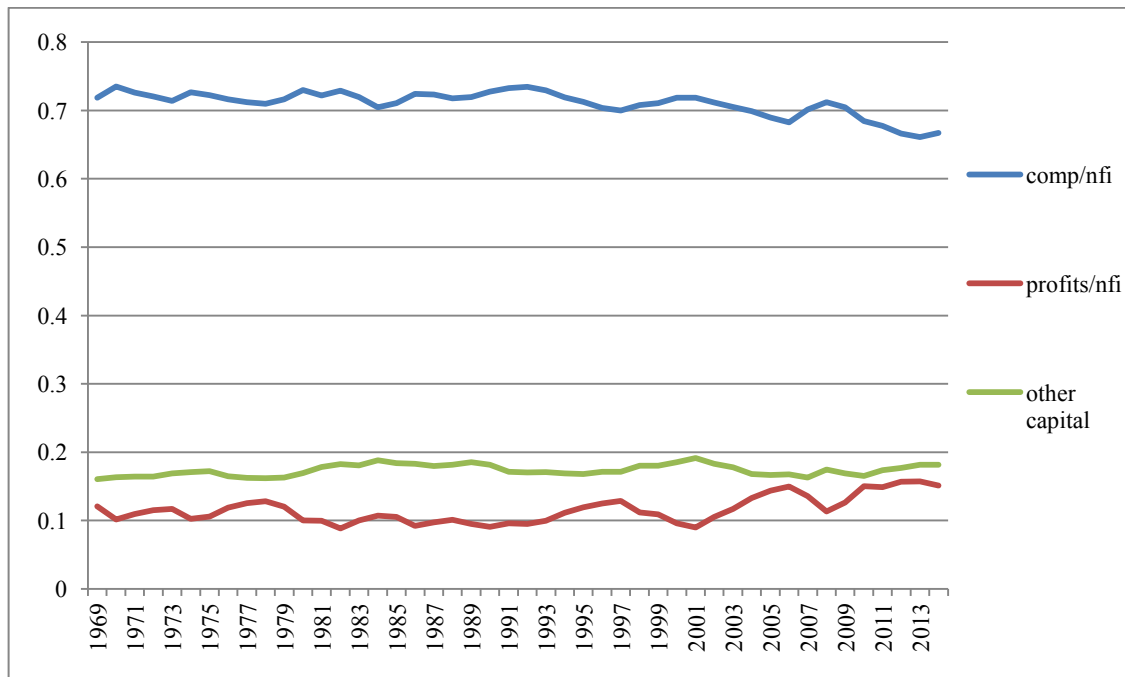
Figure 5: Shares in national income

Figure 6: Labor share in value-added: Total and selected Industries (Jorgenson Data)

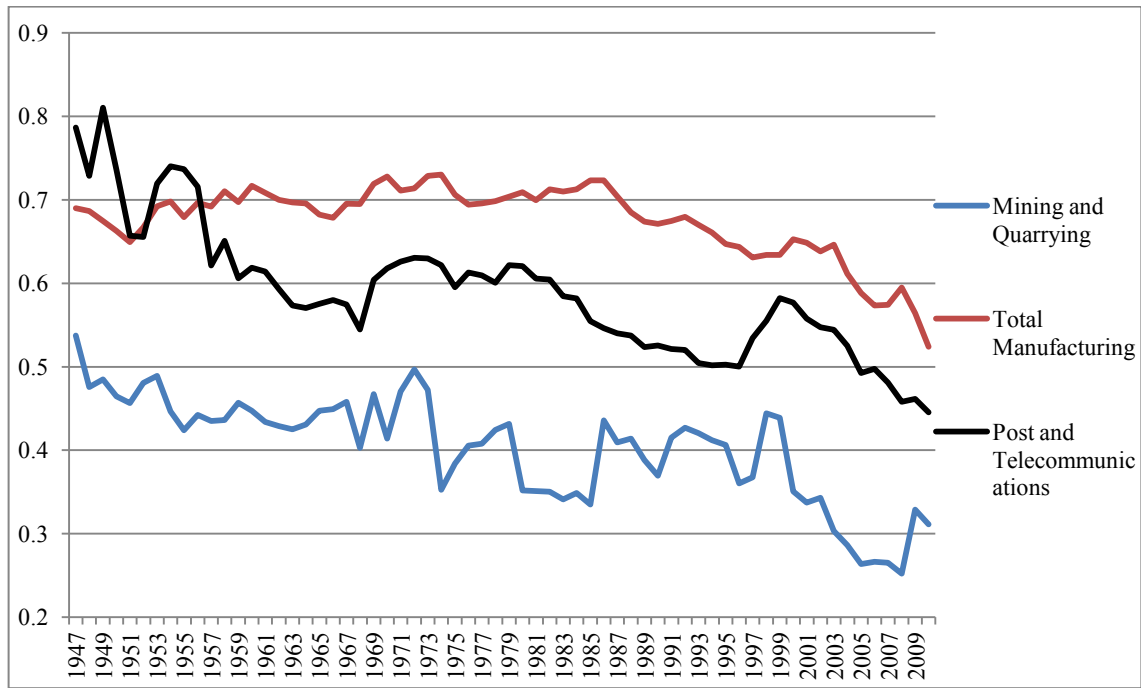


Figure 7a: Share of manufacturing in private industry (unrevised data) 1987-2011

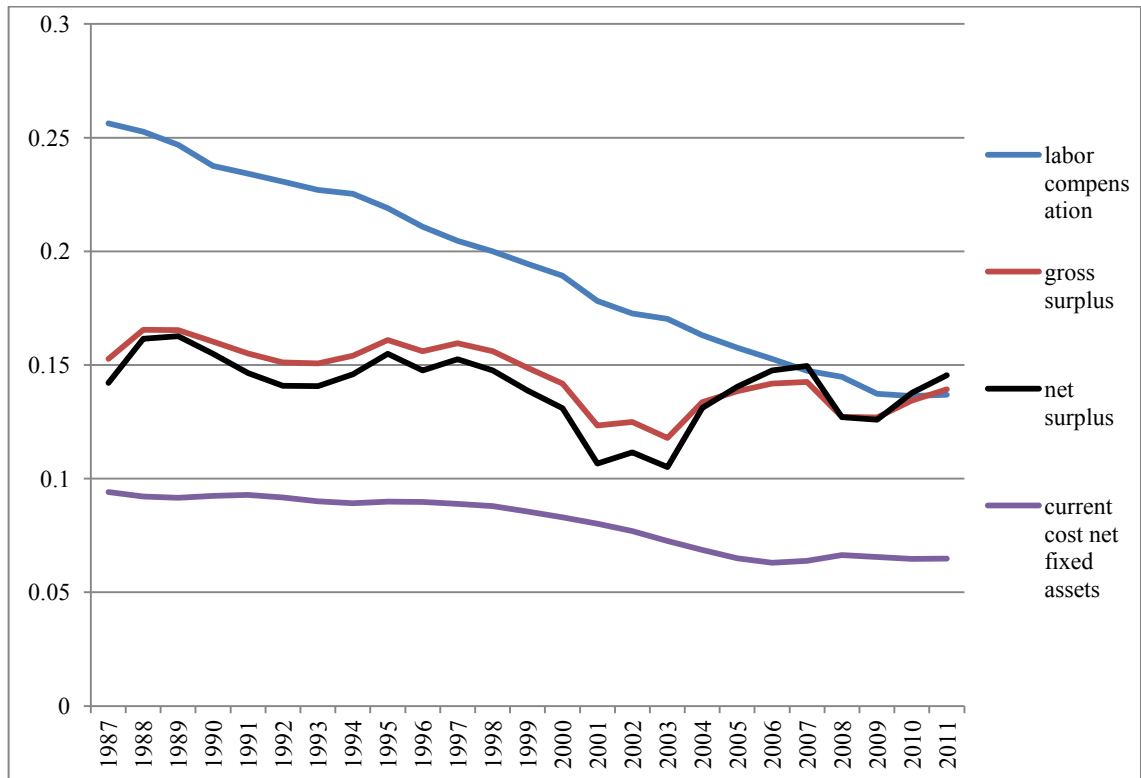


Figure 7b: Ratio of gross operating surplus to net fixed capital stock

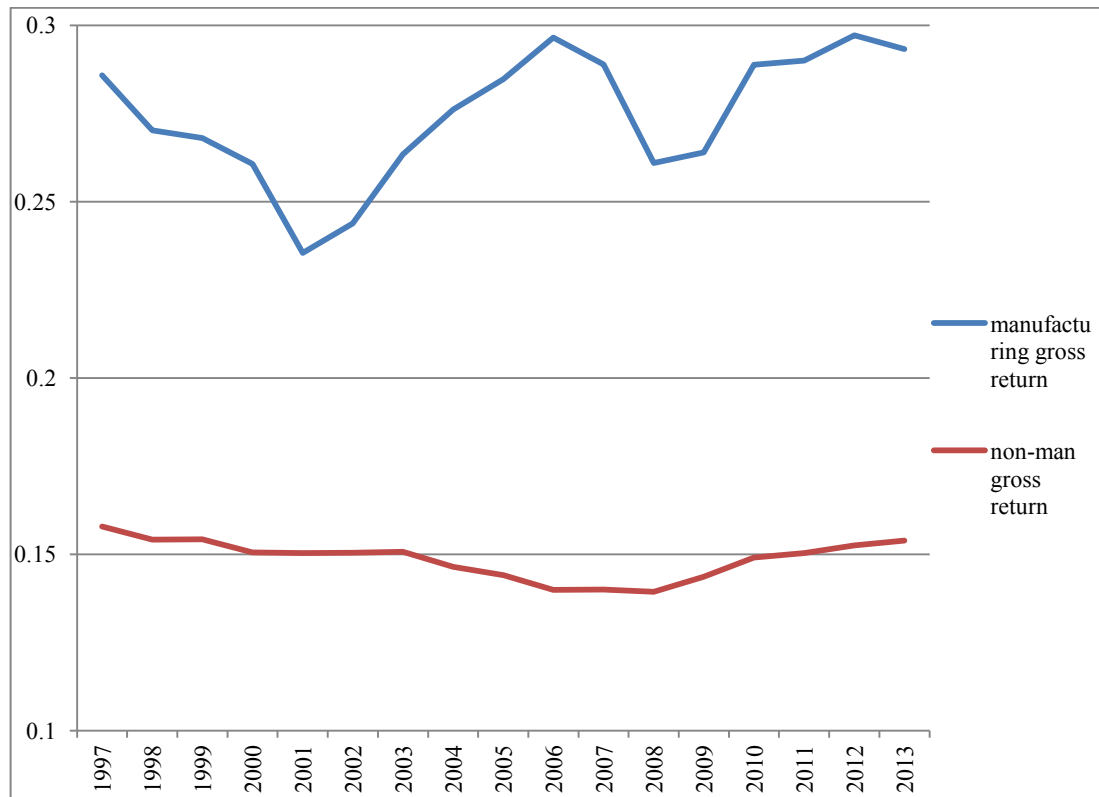


Figure 8: Average annual growth in private industry fixed assets net capital stock (BEA data)

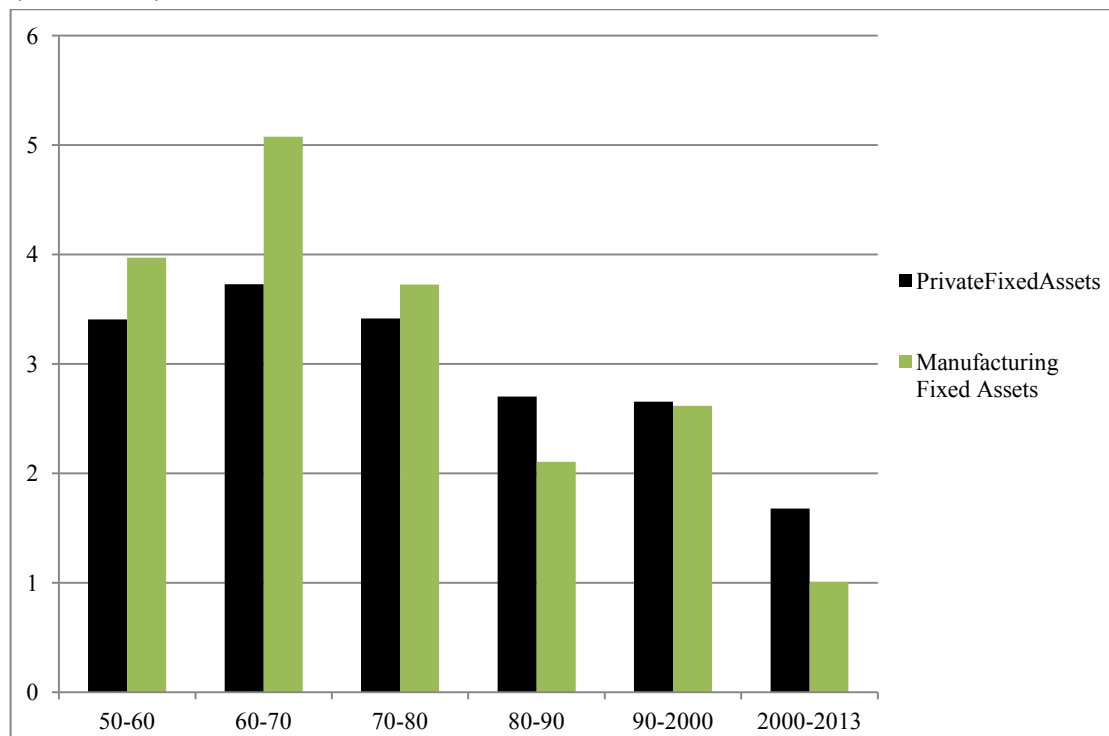


Figure 9: Ratio of net fixed assets/real output in US manufacturing (BEA data)

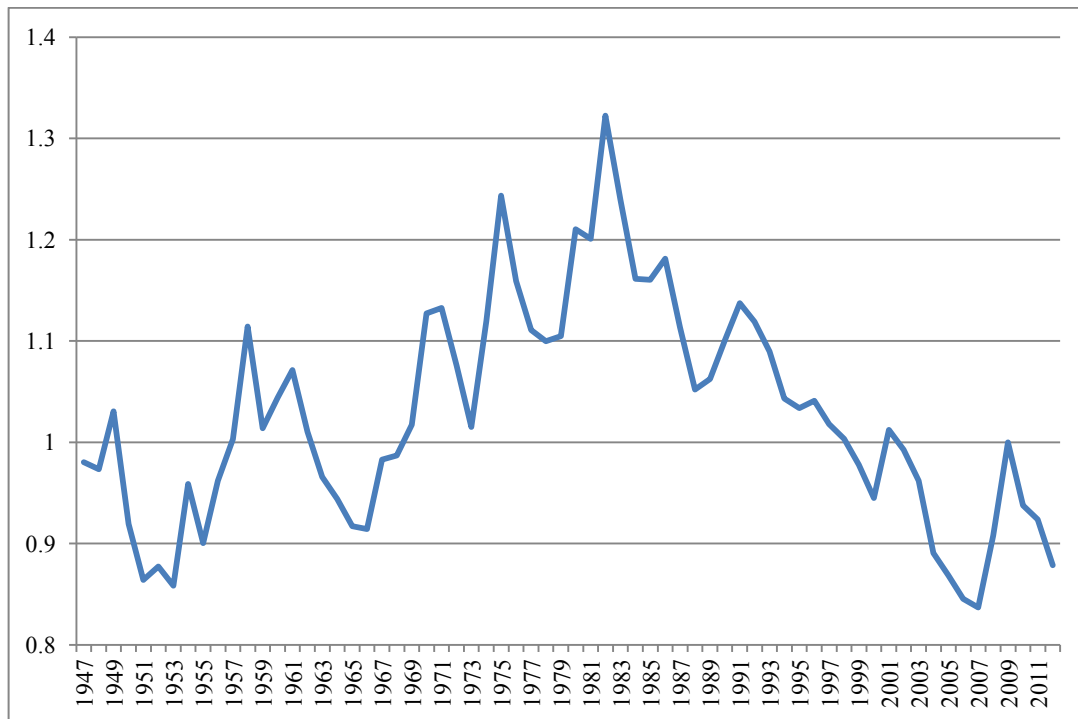


Figure 10: Annual change in ratio of net fixed capital stock to full-time equivalent employment (BEA data)

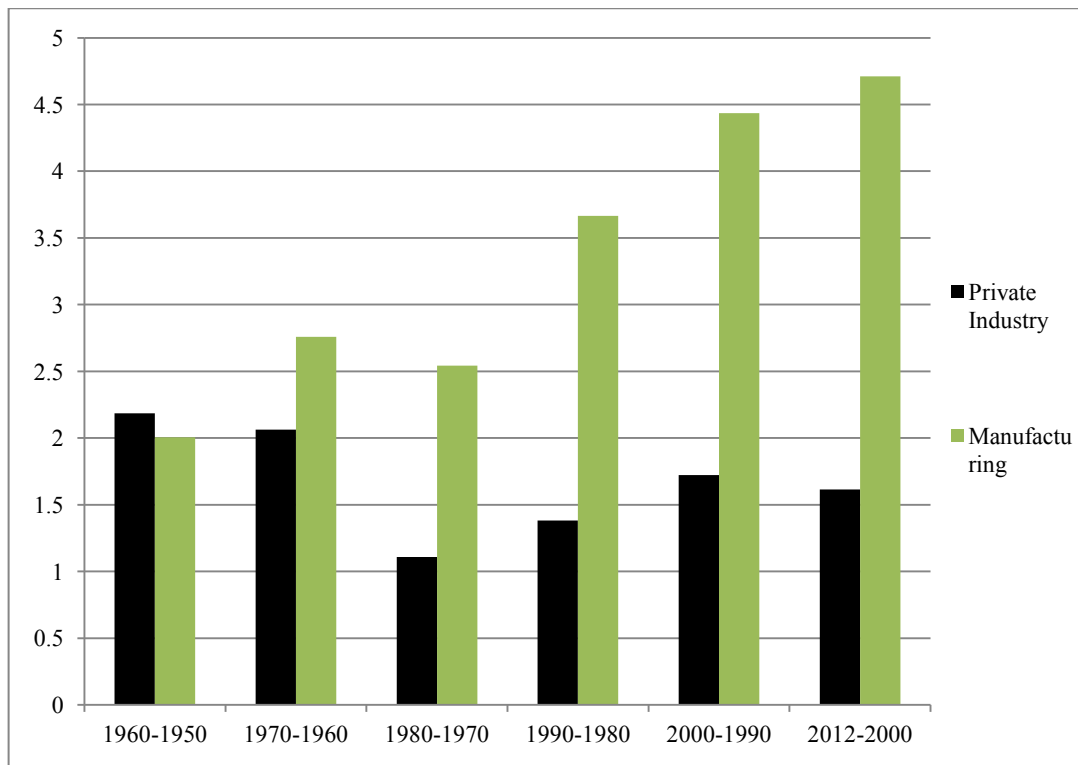


Figure 11: US non-residential investment as a share of GDP 1980 to 2013

